

Made to Order

# Peltier-Type Thermoelectric Bath

Accurately controls the temperature of liquid in the bath.  
Square type is newly added to the product lineup.

Temperature stability

$\pm 0.02^{\circ}\text{C}$  to  $\pm 0.03^{\circ}\text{C}$

Compact, Lightweight

22 kg (INR-244-757)

Current consumption 3.5 A to 6 A

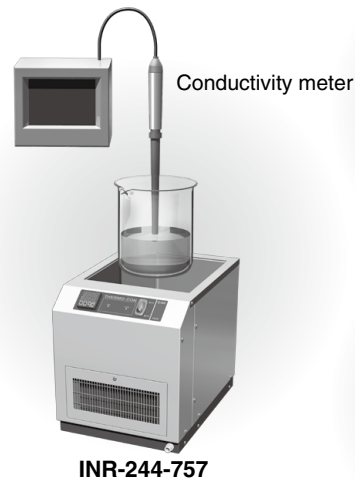
Power supply voltage 100 VAC to 240 VAC  
(Except for some models)



## Variations

Model	Usable constant temperature liquid	Cooling method	Cooling capacity	Tank capacity	Temperature range	Temperature stability
	Water	Water-cooled	140 W	Approx. 10 L	0 to 60°C	$\pm 0.03^{\circ}\text{C}$
			320 W			
	Ethylene glycol aqueous solution	Water-cooled	320 W	Approx. 23 L	0 to 60°C	$\pm 0.03^{\circ}\text{C}$
				Approx. 39 L		
	Fluorinated fluid (Square type can be used only at normal temperature.)	Air-cooled	220 W	Approx. 17 L	0 to 60°C	$\pm 0.03^{\circ}\text{C}$
		Water-cooled	140 W	Approx. 3 L	-15 to 60°C	$\pm 0.02^{\circ}\text{C}$
	280 W		Approx. 5.5 L			

## Application Examples



Temperature control of sample and reagent



Temperature control of source gas for MO-CVD or diffusion furnace

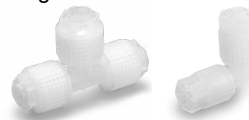


## Related Products

○ Fluoropolymer piping equipment  
Refer to the [Web Catalog](#) for details.

○ Process gas equipment

Fittings *LQ1/LQ3 Series*



Bore through connector *LQHB Series*



Tubing *TL/TLM Series*



Regulator

[Web Catalog](#)



Diaphragm valve

[Web Catalog](#)



## Peltier-Type Thermoelectric Bath Lineup

Specifications	Square type, water-cooled				
	Model	INR-244-745	INR-244-733	INR-244-747	INR-244-736
Model	INR-244-745		INR-244-733	INR-244-747	INR-244-736
Cooling method	Peltier, Water-cooled		Peltier, Water-cooled		
Cooling capacity*1	140 W (at 20°C Water)		320 W (at 20°C Water)		
Dimensions (W x D x H)	266 x 376 x 400 mm		266 x 376 x 400 mm		
Tank capacity (W x D x H)	216 x 216 x 250 mm (Approx. 10 L)		216 x 216 x 250 mm (Approx. 10 L)		
Weight	Approx. 15.5 kg		Approx. 16.5 kg		
Power supply voltage range	100 VAC to 240 VAC		100 VAC to 240 VAC		
Rated current (at 100 VAC)	3.5 A		5.5 A		
Liquid temperature range	0 to 60°C		0 to 60°C		
Temperature stability	±0.03°C		±0.03°C		
Communications	RS-232C	RS-485	RS-232C	RS-485	
Safety standards	CE/UKCA marking, UL (NRTL) standard, RoHS				

(INR-244-733)

Specifications	Square type, water-cooled				
	Model	INR-244-746	INR-244-734	INR-244-749	INR-244-748
Model	INR-244-746		INR-244-734	INR-244-749	INR-244-748
Cooling method	Peltier, Water-cooled		Peltier, Water-cooled		
Cooling capacity*1	320 W (at 25°C Water)		320 W (at 25°C Water)		
Dimensions (W x D x H)	350 x 510 x 400 mm		350 x 510 x 550 mm		
Tank capacity (W x D x H)	300 x 350 x 250 mm (Approx. 23 L)		300 x 350 x 400 mm (Approx. 39 L)		
Weight	Approx. 21 kg		Approx. 25 kg		
Power supply voltage range	100 VAC to 240 VAC		100 VAC to 240 VAC		
Rated current (at 100 VAC)	5.5 A		5.5 A		
Liquid temperature range	0 to 60°C		0 to 60°C		
Temperature stability	±0.03°C		±0.03°C		
Communications	RS-232C	RS-485	RS-232C	RS-485	
Safety standards	CE/UKCA marking, UL (NRTL) standard, RoHS				

(INR-244-749)

Specifications	Square type, air-cooled
	Model
Model	INR-244-757
Cooling method	Peltier, Air-cooled
Cooling capacity	220 W (at 25°C Water, Ambient temperature 25°C)
Dimensions (W x D x H)	350 x 460 x 395 mm
Tank capacity (W x D x H)	300 x 290 x 200 mm (Approx. 17 L)
Weight	Approx. 22 kg
Power supply voltage range	100 VAC to 240 VAC
Rated current (at 100 VAC)	6 A
Liquid temperature range	0 to 60°C
Temperature stability	±0.03°C
Communications	RS-232C
Safety standards	CE/UKCA marking, RoHS

Specifications	Round type, water-cooled/Remote controller	
	Model	HEBC002-WA10/HEBC002-WB10
Model	HEBC002-WA10/HEBC002-WB10	
Cooling method	Peltier, Water-cooled	
Cooling capacity*1	140 W (at 25°C Water)	
Dimensions (W x D x H)	Liquid tank 200 x 207 x 332 mm	Controller 250 x 300 x 180 mm
Tank capacity	ø130 x 188 mm (Approx. 3 L)	—
Weight	Approx. 8.5 kg	Approx. 6.5 kg
Power supply voltage range	100 VAC to 240 VAC	
Rated current (at 100 VAC)	4 A	
Liquid temperature range	-15 to 60°C	
Temperature stability	±0.02°C	
Communications	RS-485/RS-232C	
Safety standards	CE/UKCA marking, UL (NRTL) standard, RoHS	

Specifications	Round type, water-cooled/Remote controller	
	Model	INR-244-696A
Model	INR-244-696A	
Cooling method	Peltier, Water-cooled	
Cooling capacity*1	280 W (at 25°C Water)	
Dimensions (W x D x H)	Liquid tank 240 x 240 x 350 mm	Controller 220 x 330 x 123 mm
Tank capacity	ø170 x 202 mm (Approx. 5.5 L)	—
Weight	Approx. 12 kg	Approx. 5 kg
Power supply voltage range	200 VAC to 220 VAC	
Rated current (at 200 VAC)	5 A	
Liquid temperature range	-15 to 60°C	
Temperature stability	±0.02°C	
Communications	RS-485	
Safety standards	RoHS	

\*1 Conditions: Facility water temperature 20°C, flow rate 5 L/min, ambient temperature 25°C