

Mechanically Jointed Rodless Cylinder Basic Type

25A-MY1B Series

∅16, ∅20, ∅25, ∅32, ∅40, ∅50, ∅63

RoHS



How to Order

∅16, ∅20, ∅50, ∅63 **25A-MY1B20** [] [] - **300** [] - **M9BW** []

∅25, ∅32, ∅40 **25A-MY1B25** [] [] - **300** [] **Z** - **M9BW** []

Series compatible with secondary batteries

Basic type

Bore size

16	16 mm
20	20 mm
25	25 mm
32	32 mm
40	40 mm
50	50 mm
63	63 mm

Port thread type

Symbol	Type	Bore size
Nil	M5	∅16, ∅20
	Rc	
TN	NPT	∅25, ∅32, ∅40
TF	G	∅50, ∅63

Piping

Nil	Standard type
G	Centralized piping type

Number of auto switches

Nil	2
S	1
n	n

Auto switch

Nil	Without auto switch (Built-in magnet)
-----	---------------------------------------

* Applicable auto switches vary depending on the bore size. Select an applicable one referring to page 256.

Cylinder stroke [mm]

Bore size	Standard stroke*	Long stroke	Maximum manufacturable stroke
16	100, 200, 300, 400, 500, 600, 700, 800, 900, 1000, 1200, 1400, 1600, 1800, 2000	Strokes of 2001 to 3000 mm (1 mm increments) exceeding the standard stroke	3000
20, 25, 32, 40, 50, 63	* The stroke can be manufactured in 1 mm increments from 1 mm stroke.	Strokes of 2001 to 5000 mm (1 mm increments) exceeding the standard stroke	5000

Ordering example

* Long stroke can be ordered the same as the standard stroke. 25A-MY1B20-3000L-M9BW

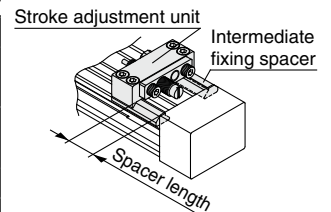
* Please be advised that with a stroke of 49 mm or less, there are cases where auto switch mounting is not possible, and the performance of the air cushion may decline.

For ∅16 to ∅40

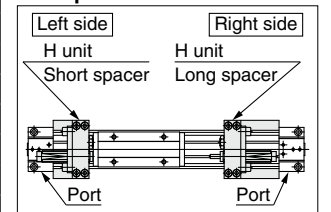
Stroke adjustment unit symbol

		Right side stroke adjustment unit									
		Without unit	A: With adjustment bolt			L: With low load shock absorber + Adjustment bolt			H: With high load shock absorber + Adjustment bolt		
			With short spacer	With long spacer	With short spacer	With long spacer	With short spacer	With long spacer	With short spacer	With long spacer	
Left side stroke adjustment unit	Without unit	Nil	SA	SA6	SA7	SL	SL6	SL7	SH	SH6	SH7
	A: With adjustment bolt	AS	A	AA6	AA7	AL	AL6	AL7	AH	AH6	AH7
	With short spacer	A6S	A6A	A6	A6A7	A6L	A6L6	A6L7	A6H	A6H6	A6H7
	With long spacer	A7S	A7A	A7A6	A7	A7L	A7L6	A7L7	A7H	A7H6	A7H7
	L: With low load shock absorber + Adjustment bolt	LS	LA	LA6	LA7	L	LL6	LL7	LH	LH6	LH7
	With short spacer	L6S	L6A	L6A6	L6A7	L6L	L6	L6L7	L6H	L6H6	L6H7
With long spacer	L7S	L7A	L7A6	L7A7	L7L	L7L6	L7	L7H	L7H6	L7H7	
H: With high load shock absorber + Adjustment bolt	HS	HA	HA6	HA7	HL	HL6	HL7	H	HH6	HH7	
With short spacer	H6S	H6A	H6A6	H6A7	H6L	H6L6	H6L7	H6H	H6	H6H7	
With long spacer	H7S	H7A	H7A6	H7A7	H7L	H7L6	H7L7	H7H	H7H6	H7	

Stroke adjustment unit mounting diagram



Example of H6H7 attachment



* Spacers are used to fix the stroke adjustment unit at an intermediate stroke position.

* The 25A-MY1B50 and 63 are not available with the stroke adjustment unit.

* The stroke adjustment unit H unit is not available for the 25A-MY1B16.

* The 25A- series specifications and dimensions are the same as those of the standard model. **For details, refer to the Web Catalog.**

Mechanically Jointed Rodless Cylinder Slide Bearing Guide Type **25A-MY1M Series** ø16, ø20, ø25, ø32, ø40, ø50, ø63

RoHS



How to Order

25A - MY1M 20 [] G - 300 [] - M9BW []

Series compatible with secondary batteries

Slide bearing guide type

Bore size

16	16 mm
20	20 mm
25	25 mm
32	32 mm
40	40 mm
50	50 mm
63	63 mm

Port thread type

Symbol	Type	Bore size
Nil	M thread	ø16, ø20
	Rc	ø25, ø32,
TN	NPT	ø40, ø50,
TF	G	ø63

Piping

Nil	Standard type
G	Centralized piping type

Cylinder stroke [mm]

Bore size	Standard stroke*	Long stroke	Maximum manufacturable stroke
16	100, 200, 300, 400, 500, 600, 700, 800, 900, 1000, 1200, 1400, 1600, 1800, 2000	Strokes of 2001 to 3000 mm (1 mm increments) exceeding the standard stroke	3000
20, 25, 32, 40, 50, 63	* The stroke can be manufactured in 1 mm increments from 1 mm stroke.	Strokes of 2001 to 5000 mm (1 mm increments) exceeding the standard stroke	5000

Ordering example

* Long stroke can be ordered the same as the standard stroke.
25A-MY1M20-3000L-M9BW

* Please be advised that with a stroke of 49 mm or less, there are cases where auto switch mounting is not possible, and the performance of the air cushion may decline.

Number of auto switches

Nil	2
S	1
n	n

Auto switch

Nil	Without auto switch (Built-in magnet)
-----	---------------------------------------

* Refer to page 256 for applicable auto switch models.

Stroke adjustment unit symbol

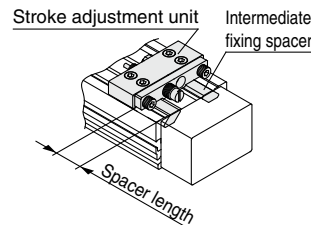
	Right side stroke adjustment unit									
	Without unit	A: With adjustment bolt			L: With low load shock absorber + Adjustment bolt			H: With high load shock absorber + Adjustment bolt		
		With short spacer	With long spacer		With short spacer	With long spacer		With short spacer	With long spacer	
Without unit	Nil	SA	SA6	SA7	SL	SL6	SL7	SH	SH6	SH7
A: With adjustment bolt	AS	A	AA6	AA7	AL	AL6	AL7	AH	AH6	AH7
With short spacer	A6S	A6A	A6	A6A7	A6L	A6L6	A6L7	A6H	A6H6	A6H7
With long spacer	A7S	A7A	A7A6	A7	A7L	A7L6	A7L7	A7H	A7H6	A7H7
L: With low load shock absorber + Adjustment bolt	LS	LA	LA6	LA7	L	LL6	LL7	LH	LH6	LH7
With short spacer	L6S	L6A	L6A6	L6A7	L6L	L6	L6L7	L6H	L6H6	L6H7
With long spacer	L7S	L7A	L7A6	L7A7	L7L	L7L6	L7	L7H	L7H6	L7H7
H: With high load shock absorber + Adjustment bolt	HS	HA	HA6	HA7	HL	HL6	HL7	H	HH6	HH7
With short spacer	H6S	H6A	H6A6	H6A7	H6L	H6L6	H6L7	H6H	H6	H6H7
With long spacer	H7S	H7A	H7A6	H7A7	H7L	H7L6	H7L7	H7H	H7H6	H7

* Spacers are used to fix the stroke adjustment unit at an intermediate stroke position.
* Stroke adjustment unit H is not available for 25A-MY1M16.

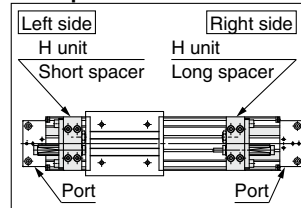
* The 25A- series specifications and dimensions are the same as those of the standard model.

For details, refer to the Web Catalog.

Stroke adjustment unit mounting diagram



Example of H6H7 attachment



Directional Control Valves

Air Cylinders

Related Products

Rotary Actuators

Air Grippers

Vacuum Equipment

Air Preparation Equipment

Clean Air Filters

Modular F.R.L./Pressure Control Equipment

Flow Control Equipment/Fittings

Detection Switches

Fluid Control Equipment

Process Gas Equipment

Electric Actuators

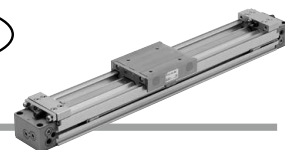
Auto Switches

Mechanically Jointed Rodless Cylinder Cam Follower Guide Type

25A-MY1C Series

∅16, ∅20, ∅25, ∅32, ∅40, ∅50, ∅63

RoHS



How to Order

25A - MY1C 25 - **300** - **M9BW** -

Series compatible with secondary batteries

Cam follower guide type

Bore size

16	16 mm
20	20 mm
25	25 mm
32	32 mm
40	40 mm
50	50 mm
63	63 mm

Port thread type

Symbol	Type	Bore size
Nil	M thread	∅16, ∅20
	Rc	∅25, ∅32,
TN	NPT	∅40, ∅50,
TF	G	∅63

Piping

Nil	Standard type
G	Centralized piping type

Cylinder stroke [mm]

Bore size	Standard stroke*	Long stroke	Maximum manufacturable stroke
16	100, 200, 300, 400, 500, 600 700, 800, 900, 1000, 1200 1400, 1600, 1800, 2000	Strokes of 2001 to 3000 mm (1 mm increments) exceeding the standard stroke	3000
20, 25, 32 40, 50, 63	* The stroke can be manufactured in 1 mm increments from 1 mm stroke.	Strokes of 2001 to 5000 mm (1 mm increments) exceeding the standard stroke	5000

Ordering example

* Long stroke can be ordered the same as the standard stroke. 25A-MY1C20-3000L-M9BW

* Please be advised that with a stroke of 49 mm or less, there are cases where auto switch mounting is not possible, and the performance of the air cushion may decline.

Stroke adjustment unit symbol

		Right side stroke adjustment unit										
		Without unit	A: With adjustment bolt		L: With low load shock absorber + Adjustment bolt		H: With high load shock absorber + Adjustment bolt					
			With short spacer	With long spacer	With short spacer	With long spacer	With short spacer	With long spacer	With short spacer	With long spacer		
Left side stroke adjustment unit	Without unit	Nil	SA	SA6	SA7	SL	SL6	SL7	SH	SH6	SH7	
	A: With adjustment bolt	AS	A	AA6	AA7	AL	AL6	AL7	AH	AH6	AH7	
	With short spacer	A6S	A6A	A6	A6A7	A6L	A6L6	A6L7	A6H	A6H6	A6H7	
	With long spacer	A7S	A7A	A7A6	A7	A7L	A7L6	A7L7	A7H	A7H6	A7H7	
Adjustment bolt	L: With low load shock absorber +	LS	LA	LA6	LA7	L	LL6	LL7	LH	LH6	LH7	
	With short spacer	L6S	L6A	L6A6	L6A7	L6L	L6	L6L7	L6H	L6H6	L6H7	
	With long spacer	L7S	L7A	L7A6	L7A7	L7L	L7L6	L7	L7H	L7H6	L7H7	
Adjustment bolt	H: With high load shock absorber +	HS	HA	HA6	HA7	HL	HL6	HL7	H	HH6	HH7	
	With short spacer	H6S	H6A	H6A6	H6A7	H6L	H6L6	H6L7	H6H	H6	H6H7	
	With long spacer	H7S	H7A	H7A6	H7A7	H7L	H7L6	H7L7	H7H	H7H6	H7	

* Spacers are used to fix the stroke adjustment unit at an intermediate stroke position.

* Stroke adjustment unit H is not available for 25A-MY1C16.

Made to order

Symbol	Specifications
-XC56	With knock pin hole

Number of auto switches

Nil	2
S	1
n	n

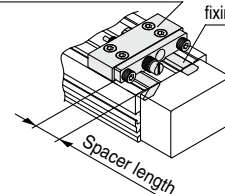
Auto switch

Nil	Without auto switch (Built-in magnet)
-----	---------------------------------------

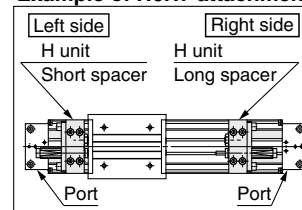
* Refer to page 256 for applicable auto switch models.

Stroke adjustment unit mounting diagram

Stroke adjustment unit Intermediate fixing spacer



Example of H6H7 attachment



Mechanically Jointed Rodless Cylinder Linear Guide Type

25A-MY1H Series

ø16, ø20, ø25, ø32, ø40

RoHS



How to Order

ø16, ø20 **25A-MY1H20** [] [] - **300** [] - **M9BW** []

ø25, ø32, ø40 **25A-MY1H25** [] [] - **300** [] **Z** - **M9BW** []

Series compatible with secondary batteries Linear guide type Bore size Port thread type Piping Cylinder stroke [mm] Number of auto switches Auto switch

16	16 mm
20	20 mm
25	25 mm
32	32 mm
40	40 mm

Symbol	Type	Bore size
Nil	M thread	ø16, ø20
	Rc	
TN	NPT	ø25, ø32, ø40
TF	G	

Nil	Standard type
G	Centralized piping type

Bore size	Standard stroke	Intermediate stroke	Long stroke	Maximum manufacturable stroke
16, 20	50, 100, 150 200, 250, 300	Strokes of 51 to 599 mm (1 mm increments) other than standard strokes	Strokes of 601 to 1000 mm (1 mm increments) exceeding the standard stroke	1000
	350, 400, 450 500, 550, 600		Strokes of 601 to 1500 mm (1 mm increments) exceeding the standard stroke	1500

Nil	2
S	1
n	n

Nil	Without auto switch (Built-in magnet)
-----	--

* Refer to page 256 for applicable auto switch models.

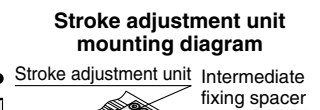
Ordering example

* Intermediate stroke can be ordered the same as the standard stroke. 25A-MY1H20-60-M9BW

* Long stroke can be ordered the same as the standard stroke. 25A-MY1H20-800L-M9BW

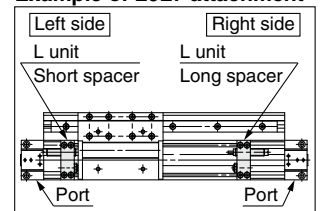
Stroke adjustment unit symbol

		Right side stroke adjustment unit									
		Without unit	A: With adjustment bolt			L: With low load shock absorber + Adjustment bolt			H: With high load shock absorber + Adjustment bolt		
			With short spacer	With long spacer	With short spacer	With long spacer	With short spacer	With long spacer	With short spacer	With long spacer	
Left side stroke adjustment unit	Without unit	Nil	SA	SA6	SA7	SL	SL6	SL7	SH	SH6	SH7
	A: With adjustment bolt	AS	A	AA6	AA7	AL	AL6	AL7	AH	AH6	AH7
	With short spacer	A6S	A6A	A6	A6A7	A6L	A6L6	A6L7	A6H	A6H6	A6H7
With long spacer	A7S	A7A	A7A6	A7	A7L	A7L6	A7L7	A7H	A7H6	A7H7	
L: With low load shock absorber + Adjustment bolt	Without unit	LS	LA	LA6	LA7	L	LL6	LL7	LH	LH6	LH7
	With short spacer	L6S	L6A	L6A6	L6A7	L6L	L6	L6L7	L6H	L6H6	L6H7
	With long spacer	L7S	L7A	L7A6	L7A7	L7L	L7L6	L7	L7H	L7H6	L7H7
H: With high load shock absorber + Adjustment bolt	Without unit	HS	HA	HA6	HA7	HL	HL6	HL7	H	HH6	HH7
	With short spacer	H6S	H6A	H6A6	H6A7	H6L	H6L6	H6L7	H6H	H6	H6H7
	With long spacer	H7S	H7A	H7A6	H7A7	H7L	H7L6	H7L7	H7H	H7H6	H7



Place the protruding section on the stroke adjusting unit side.

Example of L6L7 attachment



* Spacers are used to fix the stroke adjustment unit at an intermediate stroke position.

* H: With high load shock absorber + Adjustment bolt is not available for 25A-MY1H16.

* The 25A-series specifications and dimensions are the same as those of the standard model.

For details, refer to the **Web Catalog**.

Mechanically Jointed Rodless Cylinder Cam Follower Guide Type

25A-MY2C Series

ø16, ø25, ø40



How to Order

25A - MY2C 16 G - 300 - M9BW

Series compatible with secondary batteries

Cam follower guide type

Bore size

16	16 mm
25	25 mm
40	40 mm

Port thread type

Symbol	Type	Bore size
Nil	M thread	ø16
	Rc	
TN	NPT	ø25, ø40
TF	G	

Piping

G	Centralized piping type (Standard)
---	------------------------------------

Cylinder stroke [mm]

Bore size [mm]	Standard stroke [mm]*1	Max. manufacturable stroke [mm]
16	100, 200, 300, 400, 500, 600, 700, 800,	3000
25, 40	900, 1000, 1200, 1400, 1600, 1800, 2000	5000

*1 Strokes are manufacturable in 1 mm increments, up to the maximum stroke. However, please be advised that with a stroke of 49 mm or less, there are cases where auto switch mounting is not possible, and the performance of the air cushion may decline.

* Long stroke can be ordered the same as the standard stroke.
25A-MY2C25G-3000L-M9BW

Number of auto switches

Nil	2
S	1
n	n

Auto switch

Nil	Without auto switch (Built-in magnet)
-----	---------------------------------------

* Refer to page 256 for applicable auto switch models.

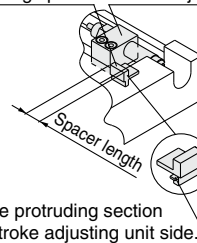
Stroke adjustment unit symbol

		Right side stroke adjustment unit						
		Without unit	L: With low load shock absorber			H: With high load shock absorber		
				With short spacer	With long spacer		With short spacer	With long spacer
Left side stroke adjustment unit	Without unit	Nil	SL	SL6	SL7	SH	SH6	SH7
	L: With low load shock absorber	LS	L	LL6	LL7	LH	LH6	LH7
		With short spacer	L6S	L6L	L6	L6L7	L6H	L6H6
	With long spacer	L7S	L7L	L7L6	L7	L7H	L7H6	L7H7
	H: With high load shock absorber	HS	HL	HL6	HL7	H	HH6	HH7
		With short spacer	H6S	H6L	H6L6	H6L7	H6H	H6H6
With long spacer	H7S	H7L	H7L6	H7L7	H7H	H7H6	H7H7	

* Spacers are used to fix the stroke adjustment unit at an intermediate stroke position.

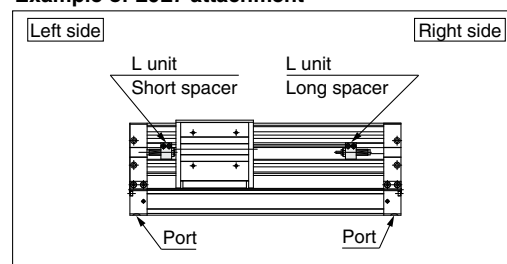
Stroke adjustment unit mounting diagram

Intermediate fixing spacer Stroke adjustment unit



Place the protruding section on the stroke adjusting unit side.

Example of L6L7 attachment



* The 25A- series specifications and dimensions are the same as those of the standard model.

For details, refer to the Web Catalog.

Mechanically Jointed Rodless Cylinder Linear Guide Type

25A-MY2H/HT Series

ø16, ø25, ø40

RoHS



How to Order

25A - MY2 H 16 G - 300 - M9BW

Series compatible with secondary batteries

Guide type

H	Linear guide, Single axis
HT	Linear guide, Double axis

Bore size

16	16 mm
25	25 mm
40	40 mm

Port thread type

Symbol	Type	Bore size
Nil	M thread	ø16
	Rc	
TN	NPT	ø25, ø40
TF	G	

Piping

G	Centralized piping type (Standard)
---	------------------------------------

Number of auto switches

Nil	2
S	1
n	n

Auto switch

Nil	Without auto switch (Built-in magnet)
-----	---------------------------------------

* Refer to page 256 for applicable auto switch models.

Cylinder stroke [mm]

Bore size [mm]	Standard stroke [mm]*1	Max. manufacturable stroke [mm]
16	50, 100, 150, 200, 250, 300, 350, 400, 450, 500, 550, 600	1000
25, 40		1500

*1 Strokes are manufacturable in 1 mm increments, up to the maximum stroke.

* Intermediate stroke can be ordered the same as the standard stroke.

25A-MY2H16G-80-M9BW

* Long stroke can be ordered the same as the standard stroke.

25A-MY2H25G-800L-M9BW

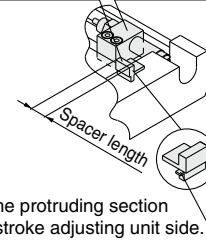
Stroke adjustment unit symbol

		Right side stroke adjustment unit						
		Without unit	L: With low load shock absorber			H: With high load shock absorber		
			With short spacer	With long spacer	With short spacer	With long spacer	With short spacer	With long spacer
Left side stroke adjustment unit	Without unit	Nil	SL	SL6	SL7	SH	SH6	SH7
	L: With low load shock absorber	LS	L	LL6	LL7	LH	LH6	LH7
	With short spacer	L6S	L6L	L6	L6L7	L6H	L6H6	L6H7
	With long spacer	L7S	L7L	L7L6	L7	L7H	L7H6	L7H7
H: With high load shock absorber	HS	HL	HL6	HL7	H	HH6	HH7	
	With short spacer	H6S	H6L	H6L6	H6L7	H6H	H6	H6H7
	With long spacer	H7S	H7L	H7L6	H7L7	H7H	H7H6	H7

* Spacers are used to fix the stroke adjustment unit at an intermediate stroke position.

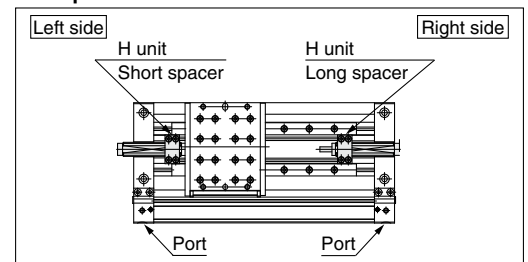
Stroke adjustment unit mounting diagram

Intermediate fixing spacer Stroke adjustment unit



Place the protruding section on the stroke adjusting unit side.

Example of H6H7 attachment



* The 25A- series specifications and dimensions are the same as those of the standard model.

For details, refer to the Web Catalog.

Mechanically Jointed Rodless Cylinder/Basic Type

25A-MY3A/3B Series

∅16, ∅20, ∅25, ∅32, ∅40, ∅50, ∅63

RoHS

How to Order



25A - MY3 B 16 - 300 - M9BW

Series compatible with secondary batteries

Type

A	Short type (Rubber bumper)
B	Standard type (Air cushion)

Cylinder bore size

16	16 mm
20	20 mm
25	25 mm
32	32 mm
40	40 mm
50	50 mm
63	63 mm

Port thread type

Symbol	Type	Bore size
Nil	M5	∅16, ∅20
	Rc	
TN	NPT	∅25, ∅32, ∅40
TF	G	∅50, ∅63

Number of auto switches

Nil	2
S	1
n	n

Auto switch

Nil	Without auto switch (Built-in magnet)
-----	---------------------------------------

* Refer to page 256 for auto switch model numbers.

Cylinder stroke [mm]

Bore size	Standard stroke*	Long stroke	Maximum manufacturable stroke
16, 20, 25, 32, 40, 50, 63	100, 200, 300, 400, 500, 600, 700, 800, 900, 1000, 1200, 1400, 1600, 1800, 2000 * The stroke can be manufactured in 1 mm increments from 1 mm stroke.	Strokes of 2001 to 3000 mm (1 mm increments) exceeding the standard stroke	3000

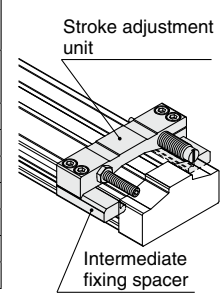
Ordering example

- * Long stroke can be ordered the same as the standard stroke. 25A-MY3A25-3000L-M9BW
- * Please be advised that with a stroke of 49 mm or less, there are cases where auto switch mounting is not possible, and the performance of the air cushion may decline.

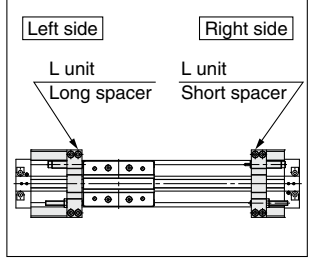
Stroke adjustment unit symbol

Left side stroke adjustment unit	Without unit	Right side stroke adjustment unit						
		Without unit	L: With low load shock absorber + Adjustment bolt			H: With high load shock absorber + Adjustment bolt		
			With short spacer	With long spacer	With short spacer	With long spacer	With short spacer	With long spacer
Without unit	Nil	SL	SL6	SL7	SH	SH6	SH7	
L: With low load shock absorber + Adjustment bolt	LS	L	LL6	LL7	LH	LH6	LH7	
With short spacer	L6S	L6L	L6	L6L7	L6H	L6H6	L6H7	
With long spacer	L7S	L7L	L7L6	L7	L7H	L7H6	L7H7	
H: With high load shock absorber + Adjustment bolt	HS	HL	HL6	HL7	H	HH6	HH7	
With short spacer	H6S	H6L	H6L6	H6L7	H6H	H6	H6H7	
With long spacer	H7S	H7L	H7L6	H7L7	H7H	H7H6	H7	

Stroke adjustment unit mounting diagram



Example of L7L6 attachment



* Spacers are used to fix the stroke adjustment unit at an intermediate stroke position.

* The 25A- series specifications and dimensions are the same as those of the standard model. For details, refer to the Web Catalog.

Mechanically Jointed Rodless Cylinder Slide Bearing Guide Type

RoHS

25A-MY3M Series

∅16, ∅25, ∅40, ∅63



How to Order

25A-MY3 M 16 **- 300** **- M9BW**

Series compatible with secondary batteries

Slide bearing guide type

Cylinder bore size

16	16 mm
25	25 mm
40	40 mm
63	63 mm

Port thread type

Symbol	Type	Bore size
Nil	M5	∅16
	Rc	
TN	NPT	∅25, ∅40, ∅63
TF	G	

Number of auto switches

Nil	2
S	1
n	n

Auto switch

Nil Without auto switch (Built-in magnet)

* Refer to page 256 for auto switch model numbers.

Cylinder stroke [mm]

Bore size	Standard stroke*	Long stroke	Maximum manufacturable stroke
16, 25, 40, 63	100, 200, 300, 400, 500, 600, 700, 800, 900, 1000, 1200, 1400, 1600, 1800, 2000 * The stroke can be manufactured in 1 mm increments from 1 mm stroke.	Strokes of 2001 to 3000 mm (1 mm increments) exceeding the standard stroke	3000

Ordering example

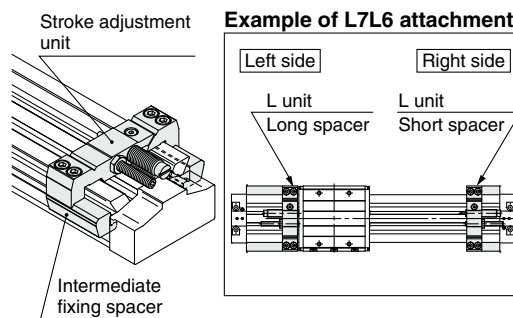
* Long stroke can be ordered the same as the standard stroke. 25A-MY3M25-3000L-M9BW

* Please be advised that with a stroke of 49 mm or less, there are cases where auto switch mounting is not possible, and the performance of the air cushion may decline.

Stroke adjustment unit symbol

		Right side stroke adjustment unit						
		Without unit	L: With low load shock absorber + Adjustment bolt			H: With high load shock absorber + Adjustment bolt		
			With short spacer	With long spacer	With short spacer	With long spacer	With short spacer	With long spacer
Left side stroke adjustment unit	Without unit	Nil	SL	SL6	SL7	SH	SH6	SH7
	L: With low load shock absorber + Adjustment bolt	LS	L	LL6	LL7	LH	LH6	LH7
	With short spacer	L6S	L6L	L6	L6L7	L6H	L6H6	L6H7
	With long spacer	L7S	L7L	L7L6	L7	L7H	L7H6	L7H7
	H: With high load shock absorber + Adjustment bolt	HS	HL	HL6	HL7	H	HH6	HH7
	With short spacer	H6S	H6L	H6L6	H6L7	H6H	H6	H6H7
With long spacer	H7S	H7L	H7L6	H7L7	H7H	H7H6	H7	

Stroke adjustment unit mounting diagram



* Spacers are used to fix the stroke adjustment unit at an intermediate stroke position.

* The 25A-series specifications and dimensions are the same as those of the standard model.

For details, refer to the Web Catalog.

Directional Control Valves
Air Cylinders
Related Products
Rotary Actuators
Air Grippers
Vacuum Equipment
Air Preparation Equipment
Clean Air Filters
Modular F.R.L./Pressure Control Equipment
Flow Control Equipment/Fittings
Detection Switches
Fluid Control Equipment
Process Gas Equipment
Electric Actuators
Auto Switches

Magnetically Coupled Rodless Cylinder/Basic Type

25A-CY3B Series

ø6, ø10, ø15, ø20, ø25, ø32, ø40, ø50, ø63

RoHS

How to Order



25A - CY3 B 25 - **300**

Series compatible with secondary batteries

Basic type

Bore size

6	6 mm
10	10 mm
15	15 mm
20	20 mm
25	25 mm
32	32 mm
40	40 mm
50	50 mm
63	63 mm

Port thread type

Symbol	Type	Bore size
Nil	M thread	6, 10, 15
	Rc	
TN	NPT	20, 25, 32, 40
TF	G	50, 63

Standard stroke [mm]

Bore size	Standard stroke	Max. manufacturable stroke
6	50, 100, 150, 200	300
10	50, 100, 150, 200, 250, 300	500
15	50, 100, 150, 200, 250, 300, 350 400, 450, 500	1000
20	100, 150, 200, 250, 300, 350 400, 450, 500, 600, 700, 800	1500
25		2000
32		
40, 50, 63	100, 150, 200, 250, 300, 350, 400 450, 500, 600, 700, 800, 900, 1000	

- * Please contact SMC if the maximum stroke is exceeded.
- * The longer the stroke, the larger the amount of deflection in a cylinder tube. Pay attention to the mounting bracket and clearance value.
- * Intermediate stroke is available in 1 mm increments.

* The 25A- series specifications and dimensions are the same as those of the standard model.

For details, refer to the **Web Catalog**.

Magnetically Coupled Rodless Cylinder/Direct Mount Type

25A-CY3R Series

ø6, ø10, ø15, ø20, ø25, ø32, ø40, ø50, ø63

RoHS

How to Order



25A - CY3R [] [] - 25 [] [] - 300 [] [] - M9BWL [] []

Series compatible with secondary batteries

Direct mount type

Piping type

Nil	Standard type
G	Centralized piping type

* Type G (centralized piping) is not available for ø6.

Bore size

6	6 mm
10	10 mm
15	15 mm
20	20 mm
25	25 mm
32	32 mm
40	40 mm
50	50 mm
63	63 mm

Port thread type

Symbol	Type	Bore size
Nil	M thread	6, 10, 15
	Rc	20, 25, 32, 40, 50, 63
TN	NPT	
TF	G	

Number of auto switches

Nil	2
S	1
n	n

Auto switch

Nil	ø6 to ø15	Without auto switch (Built-in magnet)
	ø25 to ø63	
M	ø20	Without auto switch (Built-in magnet for reed switch)
		Without auto switch (Built-in magnet for solid state switch)

* Refer to page 256 for applicable auto switch models.

Switch rail

Nil	With switch rail
N	Without switch rail

* A type with switch rail has built-in auto switch magnets.

* ø15 has built-in auto switch magnets even without switch rail.

* Centralized piping type (G) is not available without switch rail (N).

Cylinder stroke [mm]

Bore size	Standard stroke	Max. stroke without switch	Max. stroke with switch
6	50, 100, 150, 200	300	300
10	50, 100, 150, 200, 250, 300	500	500
15	50, 100, 150, 200, 250, 300, 350, 400, 450, 500	1000	750
20	100, 150, 200, 250, 300, 350, 400, 450, 500, 600, 700, 800	1500	1000
25			1200
32			
40, 50, 63	100, 150, 200, 250, 300, 350, 400, 450, 500, 600, 700, 800, 900, 1000	2000	1500

* The longer the stroke, the larger the amount of deflection in a cylinder tube. Pay attention to the mounting bracket and clearance value.

* Intermediate stroke is available in 1 mm increments.

* The 25A- series specifications and dimensions are the same as those of the standard model.

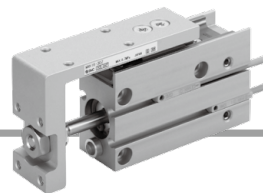
For details, refer to the Web Catalog.

Compact Slide

25A-MXH Series

ø6, ø10, ø16, ø20

RoHS



How to Order

25A - MXH 10 - 60 Z - M9BW

Series compatible with secondary batteries

Compact slide

Bore size

6	6 mm
10	10 mm
16	16 mm
20	20 mm

Number of auto switches

Nil	2
S	1

Auto switch

Nil	Without auto switch (Built-in magnet)
-----	---------------------------------------

* For applicable auto switch models, refer to page 258.

Cylinder stroke [mm]

6, 10, 16, 20	5, 10, 15, 20, 25, 30, 40 50, 60
---------------	-------------------------------------

* The 25A- series specifications and dimensions are the same as those of the standard model.

For details, refer to the **Web Catalog**.

Air Slide Table

25A-MXS Series

ø6, ø8, ø12, ø16, ø20, ø25



How to Order

Air slide table **25A - MXS** **16** **□** **□** **- 50** **AS** **- M9BW** **□**

Series compatible with secondary batteries

Port thread type

Nil	M thread	ø6 to ø16
	Rc	
TN	NPT	ø20, ø25
TF	G	

Symmetric type

Nil	Standard type
L	Symmetric type

Bore size (Standard stroke [mm])

6	10, 20, 30, 40, 50
8	10, 20, 30, 40, 50, 75
12	10, 20, 30, 40, 50, 75, 100
16	10, 20, 30, 40, 50, 75, 100, 125
20	10, 20, 30, 40, 50, 75, 100, 125, 150
25	10, 20, 30, 40, 50, 75, 100, 125, 150

Number of auto switches

Nil	2
S	1
n	n

Auto switch

Nil	Without auto switch (Built-in magnet)
-----	---------------------------------------

* Refer to page 258 for auto switch model numbers.

Adjuster option

Nil	Without adjuster
AS	Adjuster on extension end
AT	Adjuster on retraction end
A	Adjuster on both ends
BS	Absorber on extension end
BT	Absorber on retraction end
B	Absorber on both ends
ASBT	Adjuster on extension end + Absorber on retraction end
BSAT	Absorber on extension end + Adjuster on retraction end

* With shock absorber is not available in the 25A-MXS6 series.

* When the adjuster option with shock absorber is used, metal-to-metal collisions occur, and may generate dust particles.

* The 25A- series specifications and dimensions are the same as those of the standard model.

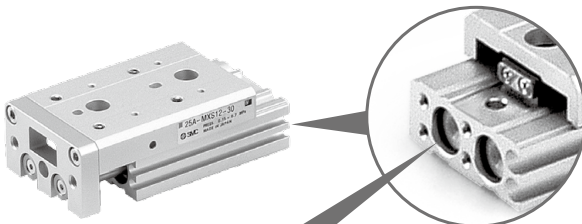
For details, refer to the **Web Catalog**.

Corrosion Resistant Air Slide Table

(Made to order: 25A-MXS□-X1949)

The material of the head cap part has been changed to a highly corrosion-resistant material.

Please contact your local sales representative for more details.



	After change	Before change
Head cap	Aluminum	Synthetic resin

Air Slide Table Double-ported Type



25A-MXQ□A Series

∅6, ∅8, ∅12, ∅16, ∅20, ∅25

How to Order



25A - MXQ **12** **A** - **30** **ZA** □ - **M9BW** □

Series compatible with secondary batteries

1 2 3 4 5 6 7

1 Bore size	2 Body option: Double-ported type A	3 Standard stroke [mm]
6		10, 20, 30, 40, 50
8		10, 20, 30, 40, 50, 75
12		10, 20, 30, 40, 50, 75, 100
16		10, 20, 30, 40, 50, 75, 100, 125
20		10, 20, 30, 40, 50, 75, 100, 125, 150
25		10, 20, 30, 40, 50, 75, 100, 125, 150

5 Functional options

Symbol	Functional option
Nil	Without functional option
1	With buffer
2	With end lock
3	Axial piping
4	With buffer, end lock
5	With buffer, axial piping

7 Number of auto switches

Nil	2
S	1
n	n

6 Auto switch

Nil	Without auto switch (Built-in magnet)
-----	---------------------------------------

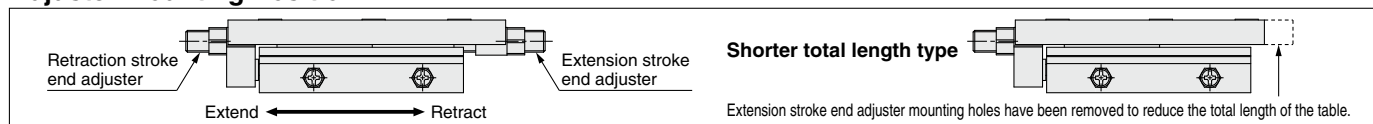
* For applicable auto switches, refer to page 258.

4 Adjuster options/Functional option combinations

Symbol	Adjuster type*6	Adjuster mounting position*1		Functional option combination					
		Extension stroke end	Retraction stroke end	Nil	1	2	3	4	5
				Without functional option	With buffer*2*7	With end lock	Axial piping*5	With buffer, end lock*2*7	With buffer, axial piping*2*5*7
Z	Without adjuster			○	○	○	○	○	○
ZA	Metal stopper with bumper	●	●	○	×	×	○	×	×
ZB		●	●	○	×	○	○	×	×
ZC	Rubber stopper	●	●	○	×	×	○	×	×
ZD		●	●	○	○	○	○	○	○
ZE	Shock absorber/RJ	●	●	○	×	×	○	×	×
ZF		●	●	○	×	×	○	×	×
ZG	Metal stopper	●	●	○	×	×	○	×	×
ZH		●	●	○	×	○	○	×	×
ZI	Shorter total length type*3	●	●	○	×	×	○	×	×
ZJ		●	●	○	×	×	○	×	×
ZK	Retraction stroke end adjuster	●	●	○	×	×	○	×	×
ZL		●	●	○	×	×	○	×	×
ZM	Extension stroke end adjuster	●	●	○	×	×	○	×	×
ZN		●	●	○	×	×	○	×	×
ZP	Metal stopper with bumper	Without adjuster		○	○*4	×	○	×	○*4
ZQ		Rubber stopper	●	●	○	×	×	○	×
ZR	Rubber stopper	Shock absorber/RJ	●	●	○	×	×	○	×
ZS		Metal stopper	●	●	○	×	×	○	×
ZT	Shock absorber/RJ	Metal stopper with bumper	●	●	○	×	×	○	×
ZU		Metal stopper	●	●	○	×	×	○	×
ZV	Metal stopper	Rubber stopper	●	●	○	×	×	○	×
ZW		Shock absorber/RJ	●	●	○	×	×	○	×
ZX	Rubber stopper	Metal stopper	●	●	○	×	×	○	×
ZY		Shock absorber/RJ	●	●	○	×	×	○	×
ZZ	Shock absorber/RJ	Metal stopper	●	●	○	×	×	○	×
ZA		Metal stopper with bumper	●	●	○	×	×	○	×
ZB	Metal stopper	Rubber stopper	●	●	○	×	×	○	×
ZC		Shock absorber/RJ	●	●	○	×	×	○	×
ZD	Rubber stopper	Metal stopper	●	●	○	×	×	○	×
ZE		Shock absorber/RJ	●	●	○	×	×	○	×
ZF	Shock absorber/RJ	Metal stopper	●	●	○	×	×	○	×
ZG		Metal stopper with bumper	●	●	○	×	×	○	×
ZH	Metal stopper	Rubber stopper	●	●	○	×	×	○	×
ZI		Shock absorber/RJ	●	●	○	×	×	○	×
ZJ	Rubber stopper	Metal stopper	●	●	○	×	×	○	×
ZK		Shock absorber/RJ	●	●	○	×	×	○	×
ZL	Shock absorber/RJ	Metal stopper	●	●	○	×	×	○	×
ZM		Metal stopper with bumper	●	●	○	×	×	○	×
ZN	Metal stopper	Rubber stopper	●	●	○	×	×	○	×
ZO		Shock absorber/RJ	●	●	○	×	×	○	×
ZP	Rubber stopper	Metal stopper	●	●	○	×	×	○	×
ZQ		Shock absorber/RJ	●	●	○	×	×	○	×
ZR	Shock absorber/RJ	Metal stopper	●	●	○	×	×	○	×
ZS		Metal stopper with bumper	●	●	○	×	×	○	×
ZT	Metal stopper	Rubber stopper	●	●	○	×	×	○	×
ZU		Shock absorber/RJ	●	●	○	×	×	○	×
ZV	Rubber stopper	Metal stopper	●	●	○	×	×	○	×
ZW		Shock absorber/RJ	●	●	○	×	×	○	×
ZX	Shock absorber/RJ	Metal stopper	●	●	○	×	×	○	×
ZY		Metal stopper with bumper	●	●	○	×	×	○	×
ZZ	Metal stopper	Rubber stopper	●	●	○	×	×	○	×
ZA		Shock absorber/RJ	●	●	○	×	×	○	×

- *1 ●: Shipped together with the product, but not assembled. Without any symbol for the adjuster mounting position: The adjuster can be mounted afterward.
- *2 For the buffer mechanism, the buffer stroke will be shorter for the stroke that is adjusted by the extension stroke end adjuster.
- *3 Extension stroke end adjuster mounting holes have been removed to reduce the total length of the table.
- *4 The shorter total length type can be used, but a retraction stroke end adjuster cannot be mounted afterward.
- *5 There is no piping port on the side surface of the product.
- *6 The metal stopper with bumper option is not available for ∅6.
- *7 As there is no magnet in the buffer mechanism, auto switches cannot be used on the buffer part.

Adjuster Mounting Position



- * When the shock absorber, metal stopper with bumper, or adjuster option with metal stopper is used, metal-to-metal collisions occur, and may generate dust particles.
- * When the buffer mechanism or the end lock mechanism functional options are used, dust particles may be generated by the buffer part as well as the end lock part.

* The 25A- series specifications and dimensions are the same as those of the standard model. **For details, refer to the Web Catalog.**

Air Slide Table

Low Thrust with High Rigidity Type

RoHS

25A-MXQ□B Series

∅6, ∅8, ∅12, ∅16, ∅20

How to Order

25A - MXQ **12** **B** - **30** **ZA** - **M9BW** □

Series compatible with secondary batteries

1 2 3 4 5 6



1 Bore size	2 Body option		3 Standard stroke [mm]
	Standard type B	Symmetric type BL	
6			10, 20, 30, 40, 50, 75
8			10, 20, 30, 40, 50, 75, 100
12			10, 20, 30, 40, 50, 75, 100, 125
16		—*1	10, 20, 30, 40, 50, 75, 100, 125, 150
20			10, 20, 30, 40, 50, 75, 100, 125, 150

*1 Not available, as the standard model has piping ports and auto switch mounting grooves on both sides. Please use the standard type.

4 Adjuster options

Symbol	Adjuster type*3	Adjuster mounting position*1	
		Extension stroke end	Retraction stroke end
Z	Without adjuster		
ZA		●	●
ZB	Metal stopper with bumper	●	
ZC			●
ZD		●	●
ZE	Rubber stopper	●	
ZF			●
ZG		●	●
ZH	Shock absorber/RJ	●	
ZJ			●
ZK		●	●
ZL	Metal stopper	●	
ZM			●
ZN	Without adjuster		
ZP	Shorter total length type*2	Rubber stopper	●
ZQ		Shock absorber/RJ	●
ZS		Metal stopper with bumper	●
ZT		Metal stopper	●
ZBF		Rubber stopper	●
ZBJ	Metal stopper with bumper	Shock absorber/RJ	●
ZBM		Metal stopper	●
ZEC	Rubber stopper	Metal stopper with bumper	●
ZEJ		Shock absorber/RJ	●
ZEM		Metal stopper	●
ZHC	Shock absorber/RJ	Metal stopper with bumper	●
ZHF		Rubber stopper	●
ZHM	Metal stopper	Metal stopper	●
ZLC		Metal stopper with bumper	●
ZLF		Rubber stopper	●
ZLJ		Shock absorber/RJ	●

5 Auto switch

Nil Without auto switch (Built-in magnet)

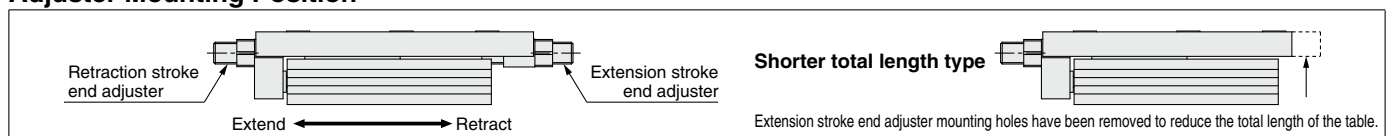
* For applicable auto switches, refer to page 258.

6 Number of auto switches

Nil	2
S	1
n	n

- *1 ●: Shipped together with the product, but not assembled
Without any symbol for the adjuster mounting position: The adjuster can be mounted afterward.
- *2 Extension stroke end adjuster mounting holes have been removed to reduce the total length of the table.
- *3 The metal stopper with bumper option is not available for ∅6.

Adjuster Mounting Position



- * When the shock absorber, metal stopper with bumper, or adjuster option with metal stopper is used, metal-to-metal collisions occur, and may generate dust particles.
- * The 25A- series specifications and dimensions are the same as those of the standard model. For details, refer to the Web Catalog.

Air Slide Table

Single Side-ported Type

25A-MXQ□C Series

ø8, ø12

RoHS

How to Order

25A - MXQ **12** **C** - **30** **ZA** □ - **M9BW** □

Series compatible with secondary batteries

1 2 3 4 5 6 7



1 Bore size	2 Body option		3 Standard stroke [mm]
	Standard type	Symmetric type	
8	C	CL	10, 20, 30, 40, 50, 75
	Port	Switch mounting groove	
12	Switch mounting groove	Port	10, 20, 30, 40, 50, 75, 100
	Port	Switch mounting groove	

5 Functional options	
Symbol	Functional option
Nil	Without functional option
1	With buffer
2	With end lock
3	Axial piping
4	With buffer, end lock
5	With buffer, axial piping

6 Auto switch	
Symbol	Auto switch
Nil	Without auto switch (Built-in magnet)

* For applicable auto switches, refer to page 258.

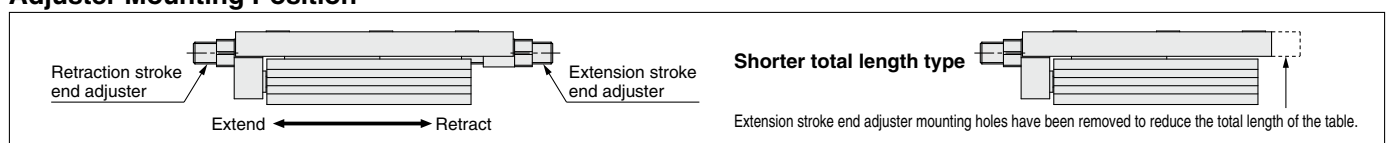
7 Number of auto switches	
Symbol	Number of auto switches
Nil	2
S	1
n	n

4 Adjuster options/Functional option combinations

Symbol	Adjuster type		Adjuster mounting position*1		Functional option combination							
					Extension stroke end	Retraction stroke end	Nil	1	2	3	4	5
							Without functional option	*2*6 With buffer	With end lock	Axial piping *5	*2*6 With buffer, end lock	*3*5*6 With buffer, axial piping
Z	Without adjuster				○	○	○	○	○	○		
ZA	Metal stopper with bumper		●	●	○	×	×	○	×	×		
ZB	Metal stopper with bumper		●	●	○	×	○	○	×	×		
ZC	Metal stopper with bumper		●	●	○	×	×	○	×	×		
ZD	Rubber stopper		●	●	○	×	×	○	×	×		
ZE	Rubber stopper		●	●	○	○	○	○	○	○		
ZF	Rubber stopper		●	●	○	×	×	○	×	×		
ZG	Rubber stopper		●	●	○	×	×	○	×	×		
ZH	Shock absorber/RJ		●	●	○	×	○	○	×	×		
ZJ	Shock absorber/RJ		●	●	○	×	×	○	×	×		
ZK	Metal stopper		●	●	○	×	×	○	×	×		
ZL	Metal stopper		●	●	○	○	○	○	○	○		
ZM	Metal stopper		●	●	○	×	×	○	×	×		
ZN	Shorter overall length type*3				○	○*4	×	○	×	○*4		
ZP	Shorter overall length type*3				○	×	×	○	×	×		
ZQ	Shorter overall length type*3				○	×	×	○	×	×		
ZR	Shorter overall length type*3				○	×	×	○	×	×		
ZS	Shorter overall length type*3				○	×	×	○	×	×		
ZT	Shorter overall length type*3				○	×	×	○	×	×		
ZBF	Metal stopper with bumper	Retraction stroke end adjuster	●	●	○	×	×	○	×	×		
ZBJ		Shock absorber/RJ	●	●	○	×	×	○	×	×		
ZBM	Rubber stopper	Retraction stroke end adjuster	●	●	○	×	×	○	×	×		
ZEC		Shock absorber/RJ	●	●	○	×	×	○	×	×		
ZEJ	Shock absorber/RJ	Retraction stroke end adjuster	●	●	○	×	×	○	×	×		
ZEM		Shock absorber/RJ	●	●	○	×	×	○	×	×		
ZHC	Metal stopper	Retraction stroke end adjuster	●	●	○	×	×	○	×	×		
ZHF		Rubber stopper	●	●	○	×	×	○	×	×		
ZHM	Metal stopper with bumper	Retraction stroke end adjuster	●	●	○	×	×	○	×	×		
ZLC		Rubber stopper	●	●	○	×	×	○	×	×		
ZLF	Metal stopper	Retraction stroke end adjuster	●	●	○	×	×	○	×	×		
ZLJ		Shock absorber/RJ	●	●	○	×	×	○	×	×		

- *1 ●: Shipped together with the product, but not assembled Without any symbol for the adjuster mounting position: The adjuster can be mounted afterward.
- *2 For the buffer mechanism, the buffer stroke will be shorter for the stroke that is adjusted by the extension stroke end adjuster.
- *3 Extension stroke end adjuster mounting holes have been removed to reduce the total length of the table.
- *4 The shorter total length type can be used, but a retraction stroke end adjuster cannot be mounted afterward.
- *5 There is no piping port on the side surface of the product.
- *6 As there is no magnet in the buffer mechanism, auto switches cannot be used on the buffer part.

Adjuster Mounting Position



- * When the shock absorber, metal stopper with bumper, or adjuster option with metal stopper is used, metal-to-metal collisions occur, and may generate dust particles.
- * When the buffer mechanism or the end lock mechanism functional options are used, dust particles may be generated by the buffer part as well as the end lock part.

* The 25A- series specifications and dimensions are the same as those of the standard model.

For details, refer to the Web Catalog.

Air Slide Table Height Interchangeable Type 25A-MXQ Series

RoHS

∅6, ∅8, ∅12, ∅16, ∅20, ∅25

How to Order

25A-MXQ 12 - 30 ZA - M9BW

Series compatible with secondary batteries

1 2 3 4 5 6 7



1 Bore size	2 Body option		3 Standard stroke [mm]
	Standard type	Symmetric type	
6	Nil	L	10, 20, 30, 40, 50
8	Port	Switch mounting groove	10, 20, 30, 40, 50, 75
12	Switch mounting groove	Port	10, 20, 30, 40, 50, 75, 100
16	Switch mounting groove	Switch mounting groove	10, 20, 30, 40, 50, 75, 100, 125
20	Port	Port	10, 20, 30, 40, 50, 75, 100, 125, 150
25	Port	Port	10, 20, 30, 40, 50, 75, 100, 125, 150

*1 Not available, as the standard model has piping ports and auto switch mounting grooves on both sides. Please use the standard type.

5 Functional options

Symbol	Functional option
Nil	Without functional option
1	With buffer
2	With end lock
3	Axial piping
4	With buffer, end lock
5	With buffer, axial piping

7 Number of auto switches

Nil	2
S	1
n	n

6 Auto switch

Nil	Without auto switch (Built-in magnet)
-----	---------------------------------------

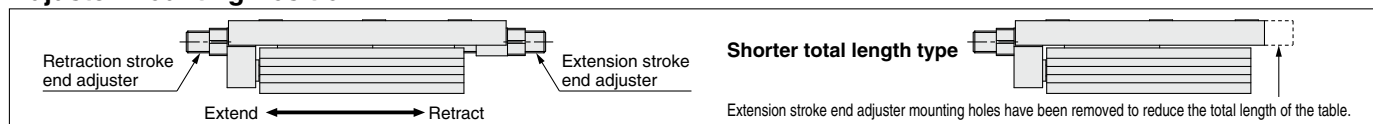
* For applicable auto switches, refer to page 258.

4 Adjuster options/Functional option combinations

Symbol	Adjuster type*6	Adjuster mounting position*1		Functional option combination					
		Extension stroke end	Retraction stroke end	Nil	1	2	3	4	5
				Without functional option	*2*7 With buffer	With end lock	Axial piping *5	*2*7 With buffer, end lock	*2*5*7 With buffer, axial piping
Z	Without adjuster			○	○	○	○	○	○
ZA		●	●	○	×	×	○	×	×
ZB	Metal stopper with bumper	●		○	×	○	○	×	×
ZC			●	○	×	×	○	×	×
ZD		●	●	○	×	×	○	×	×
ZE	Rubber stopper	●		○	○	○	○	○	○
ZF			●	○	×	×	○	×	×
ZG		●	●	○	×	×	○	×	×
ZH	Shock absorber/RJ	●		○	×	○	○	×	×
ZJ			●	○	×	×	○	×	×
ZK		●	●	○	×	×	○	×	×
ZL	Metal stopper	●		○	○	○	○	○	○
ZM			●	○	×	×	○	×	×
ZN	Shorter total length type*3	Without adjuster		○	○*4	×	○	×	○*4
ZP		Rubber stopper	●	○	×	×	○	×	×
ZQ		Shock absorber/RJ	●	○	×	×	○	×	×
ZS		Metal stopper with bumper	●	○	×	×	○	×	×
ZT		Metal stopper	●	○	×	×	○	×	×
ZBF	Metal stopper with bumper	Rubber stopper	●	○	×	×	○	×	×
ZBJ		Shock absorber/RJ	●	○	×	×	○	×	×
ZBM	Rubber stopper	Metal stopper	●	○	×	×	○	×	×
ZEC		Metal stopper with bumper	●	○	×	×	○	×	×
ZEJ	Shock absorber/RJ	Shock absorber/RJ	●	○	×	×	○	×	×
ZEM		Metal stopper	●	○	×	×	○	×	×
ZHC	Metal stopper with bumper	Metal stopper with bumper	●	○	×	×	○	×	×
ZHF		Rubber stopper	●	○	×	×	○	×	×
ZHM	Metal stopper	Metal stopper	●	○	×	×	○	×	×
ZLC		Metal stopper with bumper	●	○	×	×	○	×	×
ZLF	Rubber stopper	Rubber stopper	●	○	×	×	○	×	×
ZLJ		Shock absorber/RJ	●	○	×	×	○	×	×

- *1 ●: Shipped together with the product, but not assembled. Without any symbol for the adjuster mounting position: The adjuster can be mounted afterward.
- *2 For the buffer mechanism, the buffer stroke will be shorter for the stroke that is adjusted by the extension stroke end adjuster.
- *3 Extension stroke end adjuster mounting holes have been removed to reduce the total length of the table.
- *4 The shorter total length type can be used, but a retraction stroke end adjuster cannot be mounted afterward.
- *5 There is no piping port on the side surface of the product.
- *6 The metal stopper with bumper option is not available for ∅6.
- *7 As there is no magnet in the buffer mechanism, auto switches cannot be used on the buffer part.

Adjuster Mounting Position



- * When the shock absorber, metal stopper with bumper, or adjuster option with metal stopper is used, metal-to-metal collisions occur, and may generate dust particles.
- * When the buffer mechanism or the end lock mechanism functional options are used, dust particles may be generated by the buffer part as well as the end lock part.

- * The 25A-series specifications and dimensions are the same as those of the standard model.

For details, refer to the Web Catalog.

Directional Control Valves
 Air Cylinders
 Related Products
 Rotary Actuators
 Air Grippers
 Vacuum Equipment
 Air Preparation Equipment
 Clean Air Filters
 Modular F.R.L./Pressure Control Equipment
 Flow Control Equipment/Fittings
 Detection Switches
 Fluid Control Equipment
 Process Gas Equipment
 Electric Actuators
 Auto Switches

Air Slide Table

RoHS

25A-MXQ Series

∅6, ∅8, ∅12, ∅16, ∅20, ∅25

How to Order



25A-MXQ 16 - **50 AS** - **M9BW**

- Series compatible with secondary batteries

Port thread type

Nil	M thread	∅6 to ∅16
	Rc	
TN	NPT	∅20, ∅25
TF	G	

Symmetric type

Nil	Standard type
L	Symmetric type

Bore size (Standard stroke [mm])

6	10, 20, 30, 40, 50
8	10, 20, 30, 40, 50, 75
12	10, 20, 30, 40, 50, 75, 100
16	10, 20, 30, 40, 50, 75, 100, 125
20	10, 20, 30, 40, 50, 75, 100, 125, 150
25	10, 20, 30, 40, 50, 75, 100, 125, 150

Number of auto switches

Nil	2
S	1
n	n

Auto switch

Nil	Without auto switch (Built-in magnet)
-----	---------------------------------------

* Refer to page 258 for auto switch model numbers.

Adjuster option

Nil	Without adjuster
AS	Extension end rubber stopper
AT	Retraction end rubber stopper
A	Both ends rubber stopper
BS	Extension end absorber
BT	Retraction end absorber
B	Double absorber
CS	Extension end metal stopper
CT	Retraction end metal stopper
C	Double metal stopper
ASBT	Extension end adjuster + Retraction end absorber
ASCT	Extension end adjuster + Retraction end metal stopper
BSAT	Extension end absorber + Retraction end adjuster
BSCT	Extension end absorber + Retraction end metal stopper
CSAT	Extension end metal stopper + Retraction end adjuster
CSBT	Extension end metal stopper + Retraction end absorber

* With shock absorber is not available in the 25A-MXQ6 series.

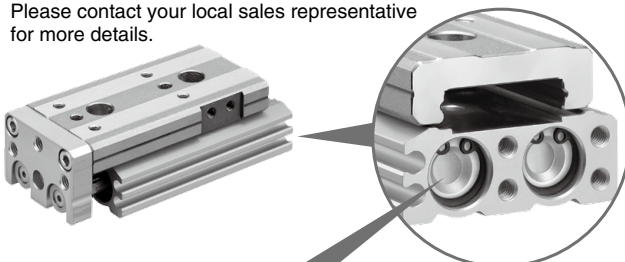
* When the adjuster option with shock absorber or metal stopper is used, metal-to-metal collisions occur, and may generate dust particles.

Corrosion Resistant Air Slide Table

(Made to order: 25A-MXQ□-X771)

The material of the head cap part has been changed to a highly corrosion-resistant material.

Please contact your local sales representative for more details.



	After change	Before change
Head cap	Aluminum	Synthetic resin

* The 25A- series specifications and dimensions are the same as those of the standard model.

For details, refer to the **Web Catalog**.

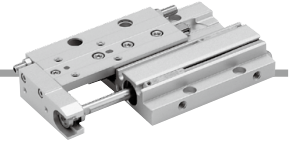
Low Profile Slide Table

25A-MXF Series

ø8, ø12, ø16, ø20



How to Order



25A - MXF 12 - 50 - M9BW

Series compatible with secondary batteries

Bore size/Stroke (mm)

ø8	10, 20, 30
ø12	20, 30, 50
ø16	30, 50, 75
ø20	30, 50, 75, 100

Number of auto switches

Nil	2
S	1
n	n

Auto switch

Nil	Without auto switch (Built-in magnet)
-----	---------------------------------------

* Refer to page 258 for auto switch model numbers.

* The 25A- series specifications and dimensions are the same as those of the standard model.

For details, refer to the **Web Catalog**.

Directional Control Valves

Air Cylinders

Related Products

Rotary Actuators

Air Grippers

Vacuum Equipment

Air Preparation Equipment

Clean Air Filters

Modular F.R.L./Pressure Control Equipment

Flow Control Equipment/Fittings

Detection Switches

Fluid Control Equipment

Process Gas Equipment

Electric Actuators

Auto Switches

Air Slide Table



25A-MXW Series

ø8, ø12, ø16, ø20, ø25



How to Order

25A – MXW 16 [] – 100 B – M9BW []

Series compatible with secondary batteries

Port thread type

Nil	M thread	ø8 to ø16
	Rc	
TN	NPT	ø20, ø25
TF	G	

Number of auto switches

Nil	2
S	1
n	n

Auto switch

Nil	Without auto switch (Built-in magnet)
-----	---------------------------------------

* Refer to page 258 for applicable auto switches.

Bore size (Standard stroke [mm])

8	25, 50, 75, 100, 125, 150
12	50, 75, 100, 125, 150
16	75, 100, 125, 150, 175, 200
20	100, 125, 150, 175, 200, 225, 250
25	100, 125, 150, 175, 200, 225, 250, 275, 300

Option

Nil	Standard (With urethane bumper)
B	With shock absorbers 2 pcs.

* When the adjuster option with shock absorber is used, metal-to-metal collisions occur, and may generate dust particles.

* The 25A- series specifications and dimensions are the same as those of the standard model.

For details, refer to the **Web Catalog**.

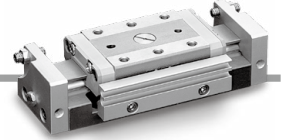
Air Slide Table

25A-MXP Series

ø6, ø8, ø10, ø12, ø16



How to Order



25A - MXP 12 - 15 [] [] - M9BW []

Series compatible with secondary batteries

Bore size (Standard stroke [mm])

6	5, 10
8	10, 20
10	10, 20
12	15, 25
16	20, 30

Adjuster option

Nil	Rubber stopper
B	Shock absorber
C	Metal stopper

Magnet/Switch rail

Nil	With magnet and rail
N	Without magnet and rail

* Auto switch cannot be mounted on type N (without magnet and rail).

Number of auto switches

Nil	2
S	1
n	n

* In the case of 25A-MXP6-5, with 2 auto switches are available for D-M9□ type and D-M9□V type only. For other switches, no other choice is affordable but with 1 piece attached (symbol: S).

Auto switch

Nil	Without auto switch
-----	---------------------

* Refer to page 258 for auto switch model numbers.

- * Adjuster for 25A-MXP6 series is available for one side only.
- * Shock absorber is not available in 25A-MXP6 and 25A-MXP8 series.
- * When the adjuster option with shock absorber or metal stopper is used, metal-to-metal collisions occur, and may generate dust particles.

* The 25A- series specifications and dimensions are the same as those of the standard model.

For details, refer to the **Web Catalog**.

Directional Control Valves

Air Cylinders

Related Products

Rotary Actuators

Air Grippers

Vacuum Equipment

Air Preparation Equipment

Clean Air Filters

Modular F.R.L./Pressure Control Equipment

Flow Control Equipment/Fittings

Detection Switches

Fluid Control Equipment

Process Gas Equipment

Electric Actuators

Auto Switches