

Compact Guide Cylinder

RoHS

25A-MGP Series

ø12, ø16, ø20, ø25, ø32, ø40, ø50, ø63, ø80, ø100



How to Order

25A - MGP M 25 - **30** Z - **M9BW**

Series compatible with secondary batteries

Compact guide cylinder

Bearing type

M	Slide bearing
L	Ball bushing

Bore size

12	12 mm
16	16 mm
20	20 mm
25	25 mm
32	32 mm
40	40 mm
50	50 mm
63	63 mm
80	80 mm
100	100 mm

Cylinder stroke [mm]

12, 16	10, 20, 30, 40, 50, 75, 100, 125, 150, 175, 200, 250
20, 25	20, 30, 40, 50, 75, 100, 125, 150, 175, 200, 250, 300, 350, 400
32 to 100	25, 50, 75, 100, 125, 150, 175, 200, 250, 300, 350, 400

Number of auto switches

Nil	2
S	1
n	n

Auto switch

Nil	Without auto switch (Built-in magnet)
------------	---------------------------------------

* For applicable auto switches, refer to page 258.

Port thread type

Nil	M5 x 0.8
	Rc
TN	NPT
TF	G

* For bore sizes ø12 and ø16, only M5 x 0.8 is available.

* The 25A- series specifications and dimensions are the same as those of the standard model.

For details, refer to the **Web Catalog**.

Compact Guide Cylinder/With Air Cushion

25A-MGP Series

∅16, ∅20, ∅25, ∅32, ∅40, ∅50, ∅63, ∅80, ∅100

RoHS



How to Order

25A - MGP M 32 - 50 AZ - M9BW

Series compatible with secondary batteries

Compact guide cylinder

Bearing type

M	Slide bearing
L	Ball bushing

Bore size

16	16 mm
20	20 mm
25	25 mm
32	32 mm
40	40 mm
50	50 mm
63	63 mm
80	80 mm
100	100 mm

Cylinder stroke [mm]

Bore size	Standard stroke
16	25, 50, 75, 100, 125, 150, 175, 200, 250
20 to 63	25, 50, 75, 100, 125, 150, 175, 200, 250, 300, 350, 400
80, 100	50, 75, 100, 125, 150, 175, 200, 250, 300, 350, 400

Port thread type

Nil	M5 x 0.8
	Rc
TN	NPT
TF	G

* For bore size 16, only M5 x 0.8 is available.

Number of auto switches

Nil	2
S	1
n	n

Auto switch

Nil	Without auto switch (Built-in magnet)
-----	---------------------------------------

* For applicable auto switches, refer to page 258.

With air cushion

* The 25A- series specifications and dimensions are the same as those of the standard model.

For details, refer to the **Web Catalog**.

Directional Control Valves

Air Cylinders

Related Products

Rotary Actuators

Air Grippers

Vacuum Equipment

Air Preparation Equipment

Clean Air Filters

Modular F.R.L./Pressure Control Equipment

Flow Control Equipment/Fittings

Detection Switches

Fluid Control Equipment

Process Gas Equipment

Electric Actuators

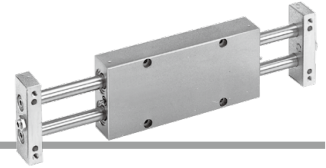
Auto Switches

Slide Unit: Built-in Shock Absorber Slide Bearing Type

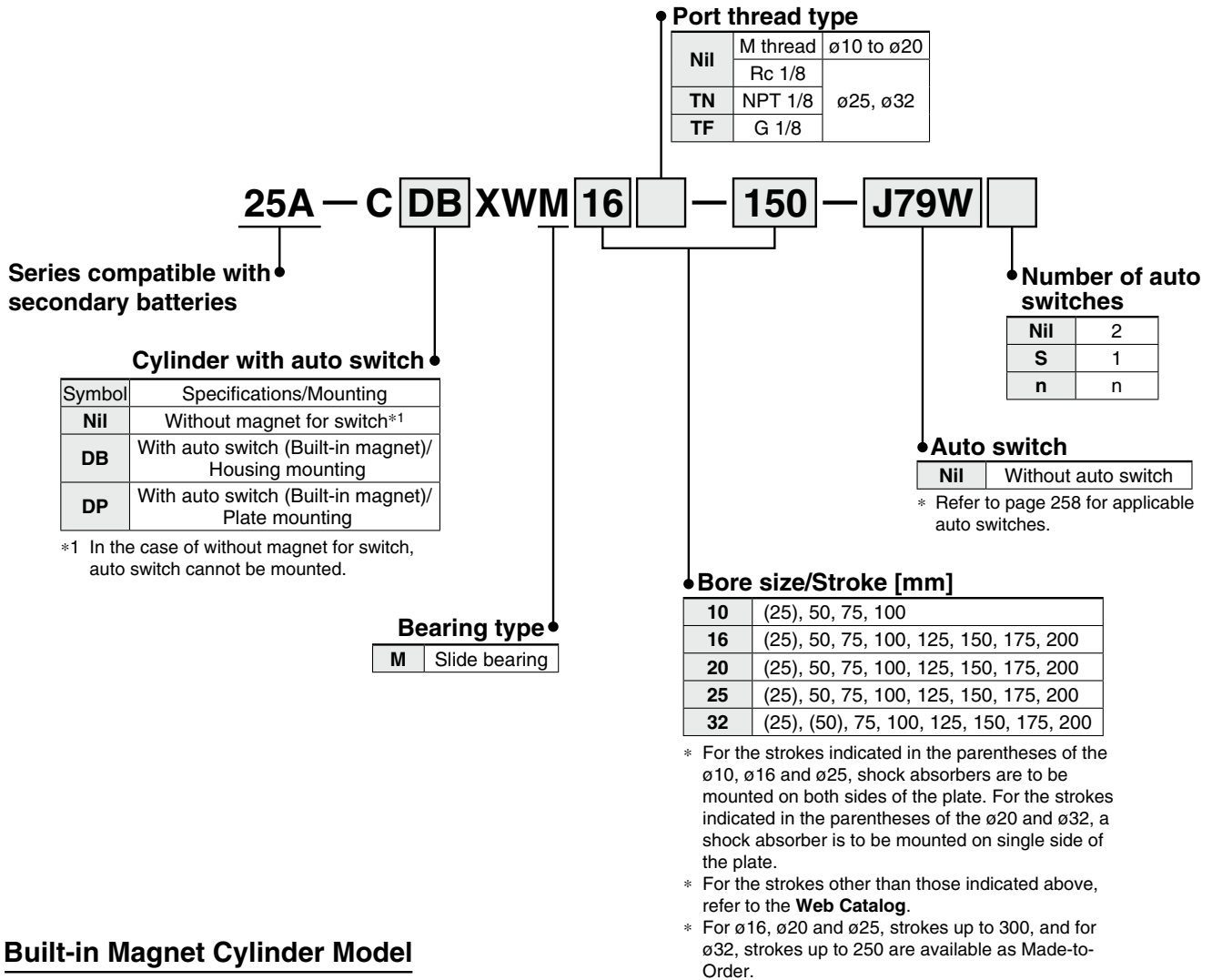
RoHS

25A-CXWM Series

ø10, ø16, ø20, ø25, ø32



How to Order



Built-in Magnet Cylinder Model

If a built-in magnet cylinder without an auto switch is required, there is no need to enter the symbol for the auto switch. (Example) 25A-CDPXWM20-100

* The 25A- series specifications and dimensions are the same as those of the standard model.

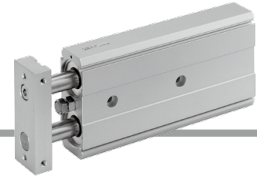
For details, refer to the **Web Catalog**.

Dual Rod Cylinder/Compact Type

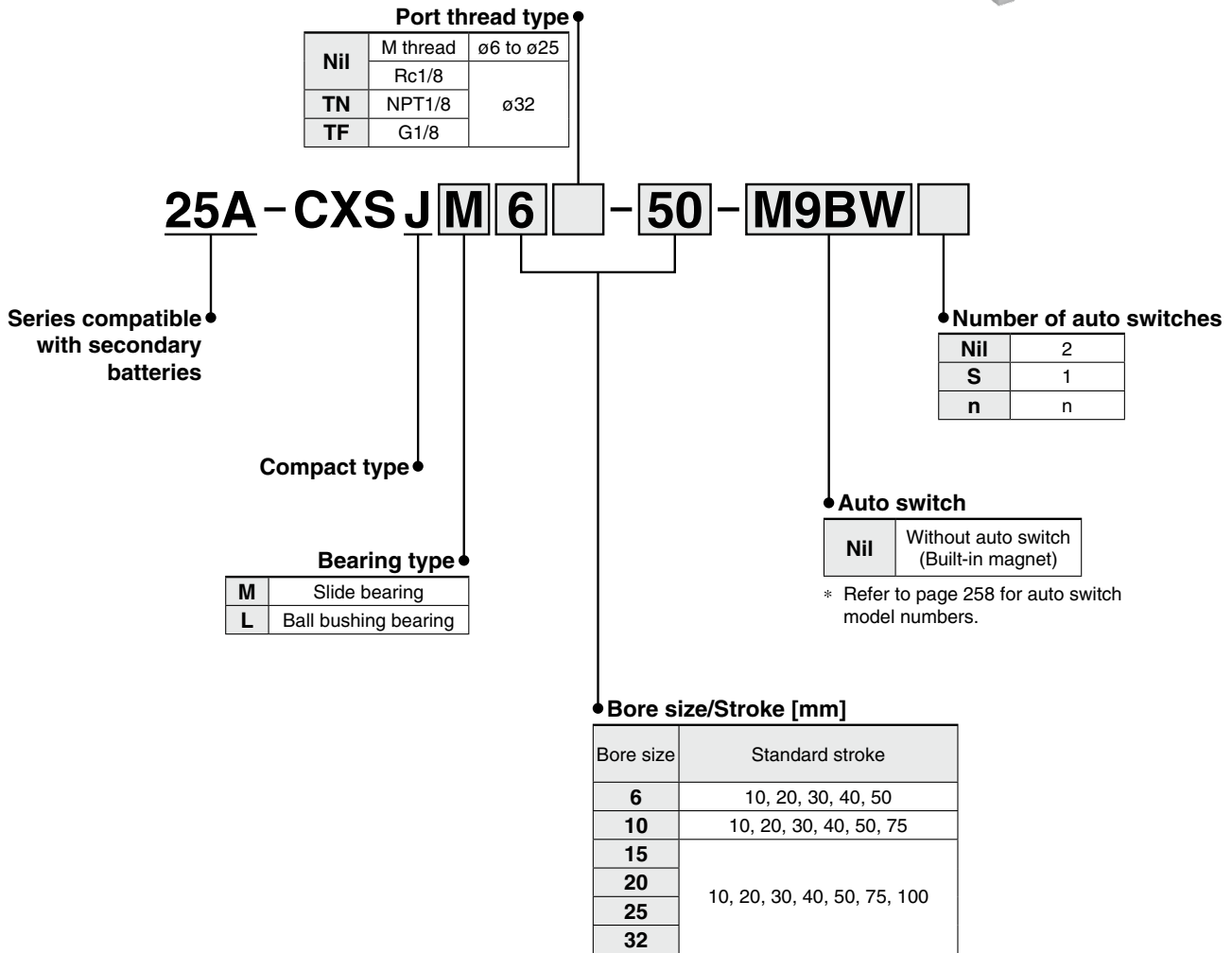
25A-CXSJ Series

ø6, ø10, ø15, ø20, ø25, ø32

RoHS



How to Order



* The 25A- series specifications and dimensions are the same as those of the standard model.

For details, refer to the **Web Catalog**.

Directional Control Valves

Air Cylinders

Related Products

Rotary Actuators

Air Grippers

Vacuum Equipment

Air Preparation Equipment

Clean Air Filters

Modular F.R.L./Pressure Control Equipment

Flow Control Equipment/Fittings

Detection Switches

Fluid Control Equipment

Process Gas Equipment

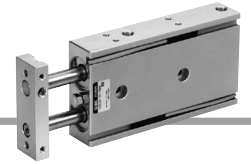
Electric Actuators

Auto Switches

Dual Rod Cylinder Basic Type

25A-CXS Series

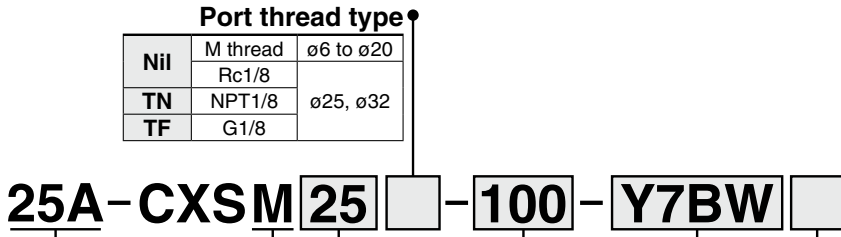
ø6, ø10, ø15, ø20, ø25, ø32



How to Order

Slide bearing type

Series compatible with secondary batteries



Bearing type

M	Slide bearing
---	---------------

Bore size/Stroke [mm]

Bore size	Standard stroke [mm]
6	10, 20, 30, 40, 50
10	10, 15, 20, 25, 30, 35, 40, 45, 50, 60, 70, 75
15, 20, 25, 32	10, 15, 20, 25, 30, 35, 40, 45, 50, 60, 70, 75, 80, 90, 100

Number of auto switches

Nil	2
S	1
n	n

Auto switch

Nil	Without auto switch (Built-in magnet)
-----	---------------------------------------

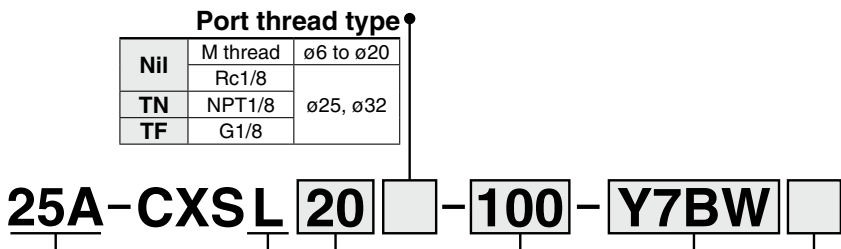
* Refer to page 258 for applicable auto switches.

* The 25A- series specifications and dimensions are the same as those of the standard model.

For details, refer to the **Web Catalog**.

Ball bushing bearing type

Series compatible with secondary batteries



Bearing type

L	Ball bushing bearing
---	----------------------

Bore size/Stroke [mm]

Bore size	Standard stroke [mm]
6	10, 20, 30, 40, 50
10	10, 15, 20, 25, 30, 35, 40, 45, 50, 60, 70, 75
15, 20, 25, 32	10, 15, 20, 25, 30, 35, 40, 45, 50, 60, 70, 75, 80, 90, 100

Number of auto switches

Nil	2
S	1
n	n

Auto switch

Nil	Without auto switch (Built-in magnet)
-----	---------------------------------------

* Refer to page 258 for applicable auto switches.

* The 25A- series specifications and dimensions are the same as those of the standard model.

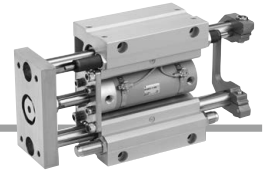
For details, refer to the **Web Catalog**.

Guide Cylinder

RoHS

25A-MGG Series

∅20, ∅25, ∅32, ∅40, ∅50



How to Order

25A - MGG L B 32 - 100 - M9BW

Series compatible with secondary batteries

Guide cylinder

Bearing type

L	Ball bushing
---	--------------

Mounting

B	Basic
F	Front mounting flange

Bore size

20	20 mm
25	25 mm
32	32 mm
40	40 mm
50	50 mm

Port thread type

Nil	Rc
TN	NPT
TF	G

Number of auto switches

Nil	2
S	1
n	n

Auto switch

Nil	Without auto switch (Built-in magnet)
-----	---------------------------------------

* Refer to page 258 for applicable auto switches.

Cylinder stroke [mm]

Bore size [mm]	Standard stroke [mm]	Long stroke [mm]
20	75, 100, 125, 150, 200	250, 300, 350, 400
25	75, 100, 125, 150, 200, 250, 300	350, 400, 450, 500
32		350, 400, 450, 500, 600
40		350, 400, 450, 500, 600, 700, 800
50		350, 400, 450, 500, 600, 700, 800, 900, 1000

* Intermediate strokes and short strokes other than those listed above are produced upon receipt of order.

* The 25A- series specifications and dimensions are the same as those of the standard model.

For details, refer to the **Web Catalog**.

Directional Control Valves

Air Cylinders

Related Products

Rotary Actuators

Air Grippers

Vacuum Equipment

Air Preparation Equipment

Clean Air Filters

Modular F.R.L./Pressure Control Equipment

Flow Control Equipment/Fittings

Detection Switches

Fluid Control Equipment

Process Gas Equipment

Electric Actuators

Auto Switches