

Compact Type Parallel Style Air Gripper

25A-JMHZ2 Series



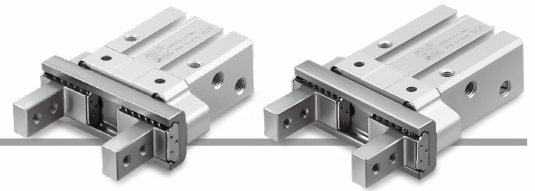
Compact Type Parallel Style Air Gripper/With Positioning Pins on the Lateral Mounting Surface

25A-JMHZ2-X6900(A, B) (Made to Order)

Compact Type Parallel Style Air Gripper/Lateral Auto Switch Mounting

25A-JMHZ2-X7460 (Made to Order)

ø8, ø12, ø16, ø20



How to Order

Bore Size

ø8 to ø20 **25A-JMHZ2-16 D - M9BW**

Series compatible with secondary batteries

1 2 3 4 5 6

1 Number of fingers

2	2
---	---

2 Bore size

8	8 mm
12	12 mm
16	16 mm
20	20 mm

3 Action

D	Double acting
---	---------------

4 Finger option

Nil	Standard
1	Side tapped mounting
2	Through-holes in opening/closing direction

5 Auto switch

Nil	Without auto switch (Built-in magnet)
-----	---------------------------------------

* Refer to page 260 for applicable auto switch models.

6 Number of auto switches

Nil	2
S	1
n	n

* The 25A- series specifications and dimensions are the same as those of the standard model. For details, refer to the Web Catalog.

Bore Size

ø8 to ø20 Made to Order **25A-JMHZ2-16 D - M9BW - X6900 A**

Series compatible with secondary batteries

1 2 3 4 5 6 7

With positioning pins on the lateral mounting surface

1 Number of fingers

2	2
---	---

2 Bore size

8	8 mm
12	12 mm
16	16 mm
20	20 mm

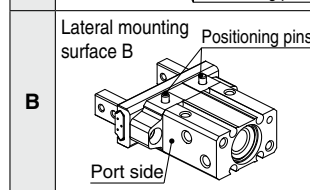
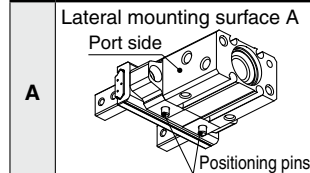
3 Action

D	Double acting
---	---------------

4 Finger option

Nil	Standard
1	Side tapped mounting
2	Through-holes in opening/closing direction

7 Direction of pin projection



5 Auto switch

Nil	Without auto switch (Built-in magnet)
-----	---------------------------------------

* Refer to page 260 for applicable auto switch models.

6 Number of auto switches

Nil	2
S	1
n	n

* The 25A- series have the same specifications and dimensions as those of the JMHZ2-X6900(A, B) (made-to-order individual specifications). For details, refer to the Web Catalog.

Bore Size

ø8 to ø20 Made to Order **25A-JMHZ2-16 D - M9BW - X7460**

Series compatible with secondary batteries

1 2 3 4 5 6

Lateral auto switch mounting

1 Number of fingers

2	2
---	---

2 Bore size

8	8 mm
12	12 mm
16	16 mm
20	20 mm

3 Action

D	Double acting
---	---------------

4 Finger option

Nil	Standard
1	Side tapped mounting
2	Through-holes in opening/closing direction

5 Auto switch

Nil	Without auto switch (Built-in magnet)
-----	---------------------------------------

* Refer to page 260 for applicable auto switch models.

6 Number of auto switches

Nil	2
S	1

* The 25A- series have the same specifications and dimensions as those of the JMHZ2-X7460 (made-to-order individual specifications). For details, refer to the Web Catalog.

Directional Control Valves
Air Cylinders
Related Products
Rotary Actuators
Air Grippers
Vacuum Equipment
Air Preparation Equipment
Clean Air Filters
Modular F.R.L./Pressure Control Equipment
Flow Control Equipment/Fittings
Detection Switches
Fluid Control Equipment
Process Gas Equipment
Electric Actuators
Auto Switches

Parallel Type Air Gripper Standard Type

25A-MHZ2 Series

ø10, ø16, ø20, ø25, ø32, ø40



How to Order

Bore size

ø16 to ø25

25A-MHZ2-16 D [] - M9BW []

Series compatible with secondary batteries

Number of fingers
2 2 fingers

Bore size

10	10 mm
16	16 mm
20	20 mm
25	25 mm

Action
D Double acting

Number of auto switches

Nil	2
S	1
n	n

Auto switch

Nil Without auto switch (Built-in magnet)

* Refer to page 260 for applicable auto switch models.

Finger position/option

Standard (MHQG2 compatible type)

Nil: Basic type

1: Side tapped mounting

2: Through-holes in opening/closing direction

3: Flat type fingers

The flat type fingers do not have standard and narrow options.

Narrow type (MHQ2 compatible type)

N: Basic type

N1: Side tapped mounting

N2: Through-holes in opening/closing direction



Bore size

ø32, ø40

25A-MHZ2-32 D [] - M9BW []

Series compatible with secondary batteries

Number of fingers
2 2 fingers

Bore size

32	32 mm
40	40 mm

Action
D Double acting

Number of auto switches

Nil	2
S	1
n	n

Auto switch

Nil Without auto switch (Built-in magnet)

* Refer to page 260 for applicable auto switch models.

Finger option

[Standard]

Nil: Basic type

1: Side tapped mounting

2: Through-holes in opening/closing direction

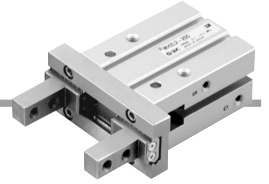
3: Flat type fingers



* The 25A-series specifications and dimensions are the same as those of the standard model.

For details, refer to the Web Catalog.

Parallel Type Air Gripper Long Stroke Type **25A-MHZL2 Series** ø10, ø16, ø20, ø25



How to Order

25A - MHZL2 - 16 D - **M9BW**

Series compatible with secondary batteries

Number of fingers
2 2 fingers

Bore size

Symbol	Bore size [mm]
10	10 mm
16	16 mm
20	20 mm
25	25 mm

Action
D Double acting

Number of auto switches

Nil	2
S	1
n	n

Auto switch
Nil Without auto switch (Built-in magnet)

* Refer to page 260 for applicable auto switch models.

Finger option

Nil: Basic type

1: Side tapped mounting

2: Through-holes in opening/closing direction

3: Flat type fingers



* The 25A- series specifications and dimensions are the same as those of the standard model.

For details, refer to the **Web Catalog**.

Directional Control Valves

Air Cylinders

Related Products

Rotary Actuators

Air Grippers

Vacuum Equipment

Air Preparation Equipment

Clean Air Filters

Modular F.R.L./Pressure Control Equipment

Flow Control Equipment/Fittings

Detection Switches

Fluid Control Equipment

Process Gas Equipment

Electric Actuators

Auto Switches

25A-MHZJ2 Series



25A-MHZJ2-X6100 (Made to Order)

Parallel Type Air Gripper with Dust Cover: Long Stroke Type

25A-MHZL2-X5955 (Made to Order)

How to Order



With Dust Cover

ø10 to ø25
ø32, ø40
Made to Order

25A - MHZJ2 - 16 D [] - M9BW []
25A - MHZJ2 - 32 D [] - M9BW [] - X6100

Series compatible with secondary batteries

Bore size

10	10 mm
16	16 mm
20	20 mm
25	25 mm

Number of fingers

2	2 fingers
---	-----------

Bore size

32	32 mm
40	40 mm

Action

D	Double acting
---	---------------

Dust cover type

Nil	Chloroprene rubber (CR)
F	Fluororubber (FKM)
S	Silicone rubber (Si)

Auto switch

Nil	Without auto switch (Built-in magnet)
S	1
n	n

Number of auto switches

Nil	2
S	1
n	n

* Refer to page 260 for applicable auto switch models.

* Sizes ø10 to ø25 of the 25A- series have the same specifications and dimensions as those of the standard model.
For details, refer to the Web Catalog.

* Sizes ø32 and ø40 of the 25A- series have the same specifications and dimensions as those of the MHZJ2-X6100 (made-to-order individual specifications).
For details, refer to the Web Catalog.

Long Stroke Type/ With Dust Cover (Made to Order)

ø10 to ø20

25A - MHZL2 - 16 D [] - M9BW [] - X5955

Series compatible with secondary batteries

Number of fingers

2	2 fingers
---	-----------

Bore size/Stroke

Symbol	Bore size [mm]
10	10 mm
16	16 mm
20	20 mm

Action

D	Double acting
---	---------------

Dust cover type

Nil	Chloroprene rubber (CR)
F	Fluororubber (FKM)
S	Silicone rubber (Si)

Auto switch

Nil	Without auto switch (Built-in magnet)
S	1
n	n

Number of auto switches

Nil	2
S	1
n	n

Long stroke type/ With dust cover

* The 25A- specifications and dimensions are the same as those of the MHZL2-X6110 (made to order individual specifications).

For details, refer to the Web Catalog.

Low Profile Air Gripper

25A-MHF2 Series

ø8, ø12, ø16, ø20



How to Order



25A-MHF 2 - 12 D [] [] - M9BW []

• **Number of fingers**

2	2 fingers
---	-----------

• **Series compatible with secondary batteries**

• **Bore size [mm]**

8	8
12	12
16	16
20	20

• **Action**

D	Double acting
---	---------------

• **Stroke**

Nil	Short stroke
1	Medium stroke
2	Long stroke

• **Number of auto switches**

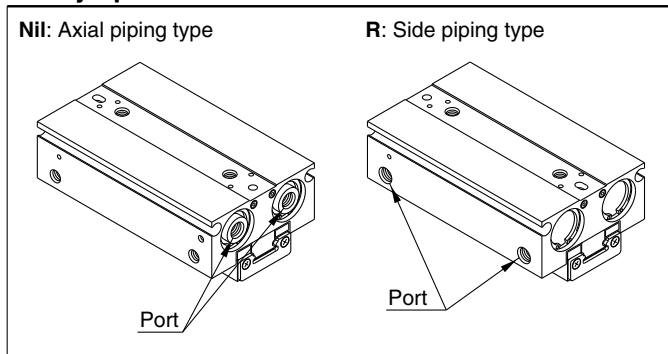
Nil	2
S	1
n	n

• **Auto switch**

Nil	Without auto switch (Built-in magnet)
-----	---------------------------------------

* Refer to page 261 for applicable auto switch models.

• **Body option**



* The 25A- series specifications and dimensions are the same as those of the standard model.

For details, refer to the **Web Catalog**.

Directional Control Valves
Air Cylinders
Related Products
Rotary Actuators
Air Grippers
Vacuum Equipment
Air Preparation Equipment
Clean Air Filters
Modular F.R.L./Pressure Control Equipment
Flow Control Equipment/Fittings
Detection Switches
Fluid Control Equipment
Process Gas Equipment
Electric Actuators
Auto Switches

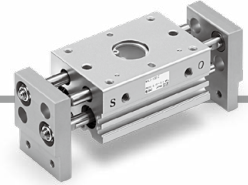
Parallel Type Air Gripper: Wide Type

25A-MHL2 Series

∅10, ∅16, ∅20, ∅25, ∅32, ∅40

RoHS

How to Order



25A-MHL2-20D **Z-M9BW**

Series compatible with secondary batteries

Wide opening

Number of fingers
2 2 fingers

Bore size

10	10 mm
16	16 mm
20	20 mm
25	25 mm
32	32 mm
40	40 mm

Action

D Double acting

Number of auto switches

Nil	2
S	1
n	n

Auto switch

Nil Without auto switch (Built-in magnet)

* Refer to page 261 for applicable auto switch models.

Opening/Closing stroke [mm]

Symbol	∅10	∅16	∅20	∅25	∅32	∅40
Nil	20	30	40	50	70	100
1	40	60	80	100	120	160
2	60	80	100	120	160	200

* The 25A- series specifications and dimensions are the same as those of the standard model.

For details, refer to the Web Catalog.

How to Order



25A-MHL2-20D **M9BW**

Series compatible with secondary batteries

Wide opening

Number of fingers
2 2 fingers

Bore size

10	10 mm
16	16 mm
20	20 mm
25	25 mm
32	32 mm
40	40 mm

Action

D Double acting

Number of auto switches

Nil	2
S	1
n	n

Auto switch

Nil Without auto switch (Built-in magnet)

* Refer to page 261 for applicable auto switch models.

Opening/Closing stroke [mm]

Symbol	∅10	∅16	∅20	∅25	∅32	∅40
Nil	20	30	40	50	70	100
1	40	60	80	100	120	160
2	60	80	100	120	160	200

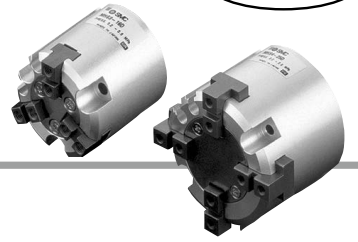
* The 25A- series specifications and dimensions are the same as those of the standard model.

For details, refer to the Web Catalog.

Parallel Type Air Gripper

25A-MHS□ Series

∅16, ∅20, ∅25, ∅32



How to Order

25A - MHS 3 - 20D - M9BW □

Series compatible with secondary batteries

Number of fingers

3	3 fingers
4	4 fingers

Bore size

16	16 mm
20	20 mm
25	25 mm
32	32 mm

Action

D	Double acting
---	---------------

Number of auto switches

Nil	2
S	1

Auto switch

Nil	Without auto switch (Built-in magnet)
-----	---------------------------------------

* Refer to page 261 for applicable auto switch models.

* The 25A- series specifications and dimensions are the same as those of the standard model.

For details, refer to the **Web Catalog**.

Directional Control Valves

Air Cylinders

Related Products

Rotary Actuators

Air Grippers

Vacuum Equipment

Air Preparation Equipment

Clean Air Filters

Modular F.R.L./Pressure Control Equipment

Flow Control Equipment/Fittings

Detection Switches

Fluid Control Equipment

Process Gas Equipment

Electric Actuators

Auto Switches

Parallel Type Air Gripper 3-Finger Type with Dust Cover

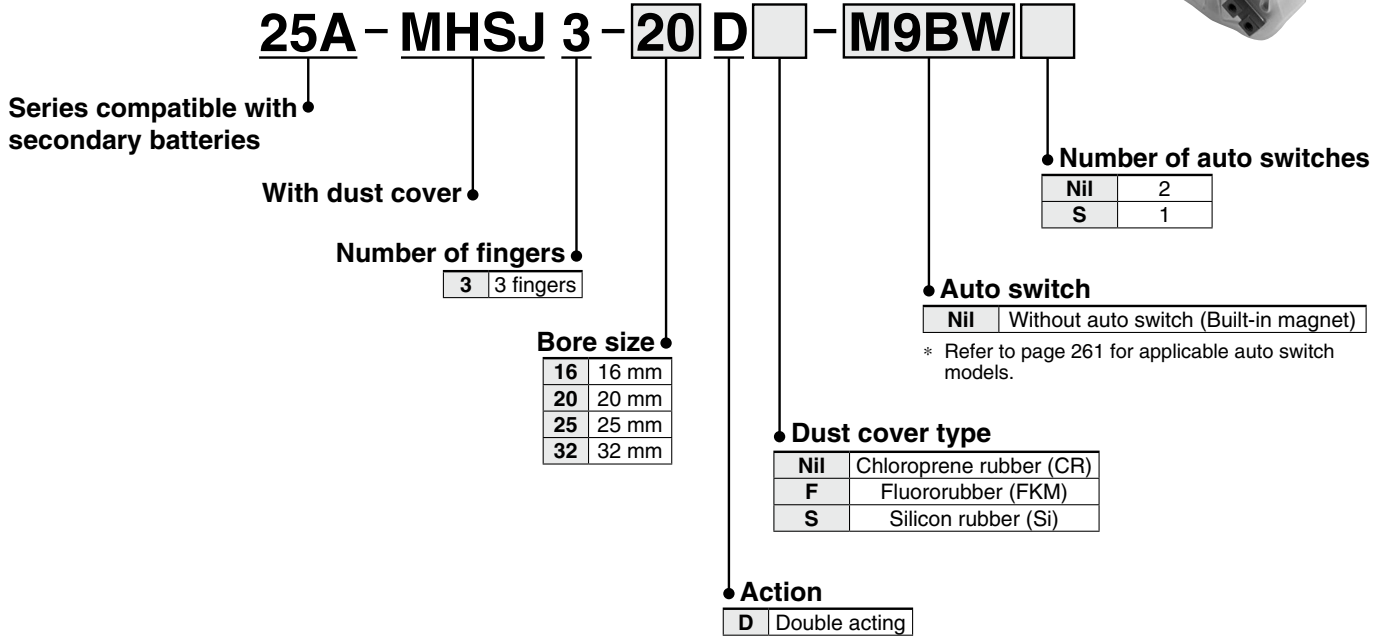
25A-MHSJ3 Series

ø16, ø20, ø25, ø32

RoHS



How to Order



* The 25A- series specifications and dimensions are the same as those of the standard model.

For details, refer to the **Web Catalog**.

180° Angular Type Air Gripper Cam Type

25A-MHY2 Series

∅10, ∅16, ∅20, ∅25



How to Order

25A - MHY 2 - 16 D 2 - M9BW

Series compatible with secondary batteries

Number of fingers

2	2 fingers
---	-----------

Bore size

10	10 mm
16	16 mm
20	20 mm
25	25 mm

Action

D	Double acting
---	---------------

Number of auto switches

Nil	2
S	1
n	n

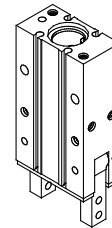
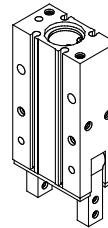
Auto switch

Nil	Without auto switch (Built-in magnet)
-----	---------------------------------------

* Refer to page 261 for applicable auto switch models.

Finger option

Nil: Standard tapped mounting 2: Through-holes in opening/closing direction



* The 25A- series specifications and dimensions are the same as those of the standard model.

For details, refer to the **Web Catalog**.

Directional Control Valves

Air Cylinders

Related Products

Rotary Actuators

Air Grippers

Vacuum Equipment

Air Preparation Equipment

Clean Air Filters

Modular F.R.L./Pressure Control Equipment

Flow Control Equipment/Fittings

Detection Switches

Fluid Control Equipment

Process Gas Equipment

Electric Actuators

Auto Switches

180° Angular Type Air Gripper Rack & Pinion Type

RoHS

25A-MHW2 Series

∅20, ∅25, ∅32, ∅40, ∅50



How to Order

25A-MHW2-20 **D** **1** - **M9BW**

Series compatible with secondary batteries

Number of fingers
2 | 2 fingers

Bore size

20	20 mm
25	25 mm
32	32 mm
40	40 mm
50	50 mm

Port thread type

Symbol	Type	Size
Nil	M thread	∅20, ∅25
	Rc	∅32
TN	NPT	∅40
TF	G	∅50

Action

D | Double acting

Number of auto switches

Nil	2
S	1
N	n

Auto switch

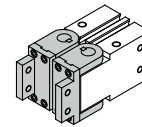
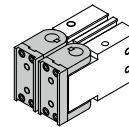
Nil | Without auto switch (Built-in magnet)

* Refer to page 261 for applicable auto switch models.

Finger option

Nil: Flat type fingers (Standard)

1: Right angle type fingers tapped mounting



- * Change of material and surface treatment are not available for the bearing or the parallel key.
- * As metal-to-metal collision occurs when the fingers are fully closed, dust particles may be generated.

* The 25A- series specifications and dimensions are the same as those of the standard model.

For details, refer to the **Web Catalog**.