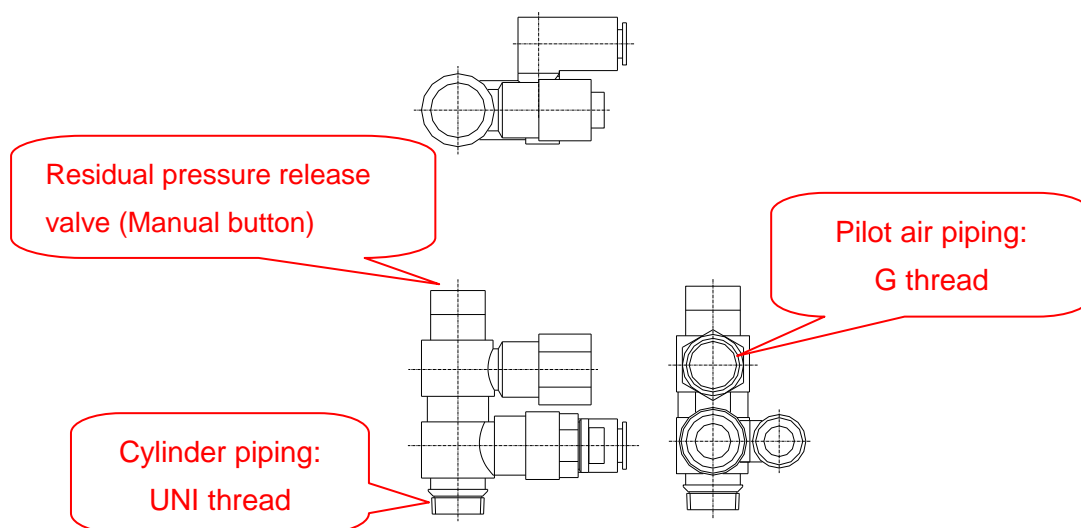


# Speed Controller with Pilot Check Valve ASP※30F—※—※—X352

SMC CORPORATION  
1-16-4 Shimbashi, Minato-ku  
Tokyo 105-8659, JAPAN  
URL: <http://www.smcworld.com>

## Features:

- With a residual pressure release valve
- Pilot air piping: G thread specification
- Cylinder piping: UNI thread specification



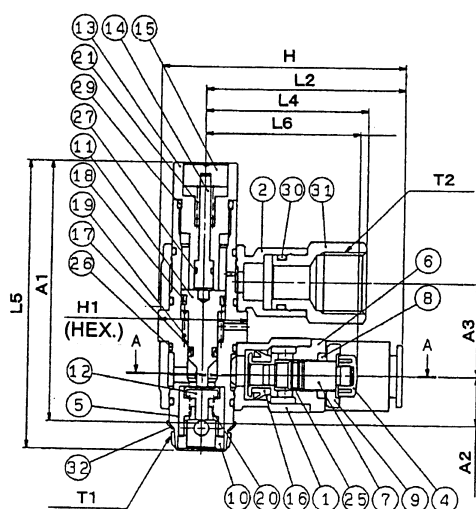
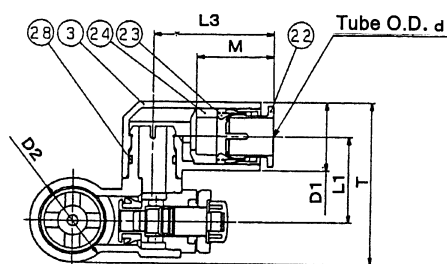
## Applications:

- Drop prevention for Z-axis cylinders
- Momentary intermediate stop for cylinders

## Specifications:

|                                      |                                     |
|--------------------------------------|-------------------------------------|
| Fluid                                | Air                                 |
| Proof pressure                       | 1.5 MPa                             |
| Operating pressure range             | 0.1 to 1 MPa                        |
| Pilot check valve operating pressure | More than 50% of operating pressure |
| Number of needle rotations           | 10 turns                            |
| Applicable tubing material           | Nylon, Soft nylon, Polyurethane     |

## Dimensions: mm




### •Dimensions

| 型式 | ASP630F-U04-<br>12-X352 | ASP430F-U02-<br>08-X352 | ASP330F-U01-<br>06-X352 | ASP530F-U03-<br>10-X352 |
|----|-------------------------|-------------------------|-------------------------|-------------------------|
| A1 | 79.4                    | 63.6                    | 45.7                    | 70.5                    |
| A2 | 18.7                    | 10.4                    | 9.4                     | 13.2                    |
| A3 | 29.8                    | 23                      | 16.1                    | 25                      |
| D1 | Ø20.9                   | Ø15.2                   | Ø11.6                   | Ø18.5                   |
| D2 | Ø28.6                   | Ø18.5                   | Ø14.2                   | Ø23                     |
| H  | 80.3                    | 58                      | 45.5                    | 66.1                    |
| H1 | 24                      | 21                      | 14                      | 24                      |
| L1 | 25.9                    | 17.9                    | 14                      | 23.1                    |
| L2 | 66                      | 46.4                    | 38.4                    | 54.1                    |
| L3 | 34.3                    | 28.2                    | 22.9                    | 32.6                    |
| L4 | 57.3(MAX.64.8)          | 36.7(MAX.41.7)          | 34.6(MAX.39.6)          | 41.9(MAX.46.9)          |
| L5 | 87.5                    | 70.4                    | 51.1                    | 77.9                    |
| L6 | 52.2                    | 41.7                    | 29.3                    | 44                      |
| M  | 21.8                    | 18.7                    | 13.7                    | 208                     |
| T  | 50.7                    | 34.7                    | 26.9                    | 43.9                    |
| T1 | Uni1/2                  | Uni1/4                  | Uni1/8                  | Uni3/8                  |
| T2 | G1/2                    | G1/4                    | G1/8                    | G3/8                    |
| d  | Ø12                     | Ø8                      | Ø6                      | Ø10                     |

•Parts table

|       |              |                     |
|-------|--------------|---------------------|
| 1・2   | Body A       | PBT                 |
| 3     | Elbow Body   | PBT                 |
| 4     | Handle       | PBT                 |
| 5     | Pilot Body   | Brass Bar           |
| 6     | Body B       | Brass Bar           |
| 7     | Needle       | Brass Bar           |
| 8     | Needle Guide | Brass Bar           |
| 9     | Lock Nut     | Steel Wire          |
| 10    | Guide        | Brass Bar           |
| 11    | Piston       | Brass Bar           |
| 12    | Valve        | Stainless Steel・NBR |
| 13    | Piston Caver | Brass Bar           |
| 14    | Rod          | Brass Bar           |
| 5     | Push Button  | Aluminium Bar       |
| 16    | U Packing    | HNBR                |
| 18・17 | DY Packing   | NBR                 |
| 19~21 | Spring       | Stainless Steel     |
| 22    | Cassette     | —                   |
| 23    | Packing      | NBR                 |
| 24    | Spaser       | PBT ※AS330:POM      |
| 25~30 | “O”Ring      | NBR                 |
| 31    | Stud         | Brass Bar           |
| 32    | Gasket       | Stainless Steel・NBR |

 **Caution** : To ensure the safest possible operation of this product, please be sure to read thoroughly the “Safety instructions” in our “Best Pneumatics” general catalog before use.