

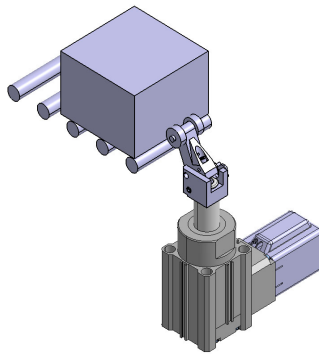


## Electric Stopper Cylinder LEBQ Series

SMC CORPORATION  
4-14-1, SOTO-KANDA, CHIYODA-KU,  
TOKYO 101-0021, JAPAN  
URL: <http://www.smcworld.com>

### Suitable for conveyor lines without an air supply

<Application Example>

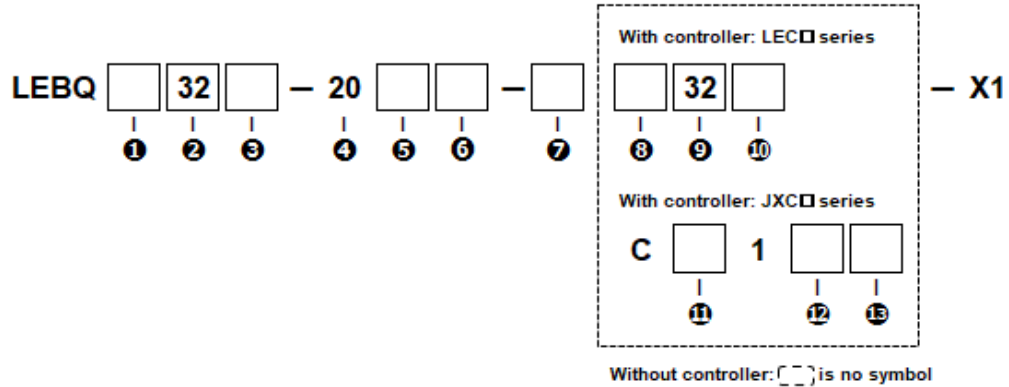


- **Rod end shape**  
Chamfered type, roller type and lever type are available.



- **Energy saving: power consumption at rod stoppage is reduced by 60%.**
- **Height and mounting**  
Compatible with Stopper Cylinder **RSQ** series

# ■How to Order



## ① Mounting

A	Ends tapped
B	Through hole

## ② Size

32
50

## ③ Non-rotating direction

E	Opposite side of motor
R	Right side of motor
L	Left side of motor
M	Motor side

## ④ Stroke[mm]

20
----

## ⑤ Rod end shape

K	Chamfered type
R	Roller type
L	Lever type (with shock absorber)
B	Lever type (With shock absorber adjustment)
C	Lever type (With shock absorber adjustment + cancel cap)
D	Lever type (With shock absorber adjustment + lock)
E	Lever type (With shock absorber adjustment + cancel cap + Lock)

## ⑥ Motor option

Nil	None
C	With motor cover

## ⑦ Actuator cable type/length

Nil	Without cable
S1	Standard cable 1.5 m
S3	Standard cable 3 m
S5	Standard cable 5 m
R1	Robotic cable (Flexible cable) 1.5 m
R3	Robotic cable (Flexible cable) 3 m
R5	Robotic cable (Flexible cable) 5 m
R8	Robotic cable (Flexible cable) 8 m*
Ra	Robotic cable (Flexible cable) 10 m*
RB	Robotic cable (Flexible cable) 15 m*
SV	Robotic cable (Flexible cable) 20 m*

\* Produced upon receipt of order  
(Robotic cable only)

### With controller: LEC□ series

For details on controllers/drivers, refer to the compatible controllers/drivers on the [SMC Website. \(P.1042,1057\)](#)

## ⑧ Controller/Driver type

Nil	Without controller/driver	
1N	LECP1	NPN
1P	(Programless type)	PNP
AN	LECPA	NPN
AP	(Pulse input type)	PNP

## ⑨ I/O cable length

Nil	Without cable
1	1.5m
3	3m
5	5m

## ⑩ Controller/Driver mounting

Nil	Screw mounting
D	DIN rail

### With controller: JXC□ series

For details on controllers/drivers, refer to the compatible controllers/drivers on the [SMC Website. \(P.1017\)](#)

## ⑪ Communication protocol/ Input/Output

E	EtherCAT
9	EtherNet/IP™
P	PROFINET
D	DeviceNet™
L	IO-Link
M	CC-Link Ver1.10
5	Parallel input (NPN)
6	Parallel input (PNP)

## ⑫ Controller mounting

7	Screw mounting
8	DIN rail

## ⑬ Communication plug connector I/O cable

Symbol	Type	Applicable interface
Nil	Without accessory	-
S	Straight type communication plug connector	DeviceNet™
T	T-branch type communication plug connector	CC-Link Ver1.10
1	I/O cable (1.5m)	Parallel input (NPN) Parallel input (PNP)
3	I/O cable (3m)	
5	I/O cable (5m)	

## ■ Specifications:

Model		LEBQ32	LEBQ50
Actuator specifications	Stroke [mm]	20	30
	Pushing force [N]	30	150
	Speed [mm/s]	80	135
	Screw lead [mm]	5	8
	Impact/Vibration resistance [ $m/s^2$ ] <sup>*2</sup>	50/20	
	Actuation type	slideing screw + Cam	
	Operating temp. range [°C]	5 to 40 (No condensation and freezing)	
	Operating humidity range [%RH]	35 to 85 (No condensation and freezing)	
Electric specifications	Motor size	<input type="checkbox"/> 28	<input type="checkbox"/> 42
	Motor type	Step motor (Servo/24 VDC)	
	Encoder (Angular displacement sensor)	Incremental A/B phase (800 pulse/rotation)	
	Power supply voltage [V]	24 VDC $\pm$ 10%	
	Power [W] <sup>*3)</sup>	Max. power 37	Max. power 46

### Weight

[kg]

Rod end shape	LEBQ32	LEBQ50
Chamfered type, Roller type	0.81	1.76
Lever with a shock absorber built-in type	0.90	1.99

### Note:

- \*1) Since this product is not equipped with a magnet, auto switch cannot be used.
- \*2) Shock No abnormality in axial and perpendicular direction of feed screw in drop impact test (initial value)  
Vibration resistance 45 to 2000Hz 1 sweep, no malfunction in axial and perpendicular direction of feed screw (initial value)
- \*3) Indicates the maximum amount of power during operation including the controller. Use when selecting power supply capacity.
- \*4) This product can only be mounted in the vertical upward position.  
(Please install the product so that the rod is facing vertically upward.)

## ■Dimensions: mm【LEBQ32】

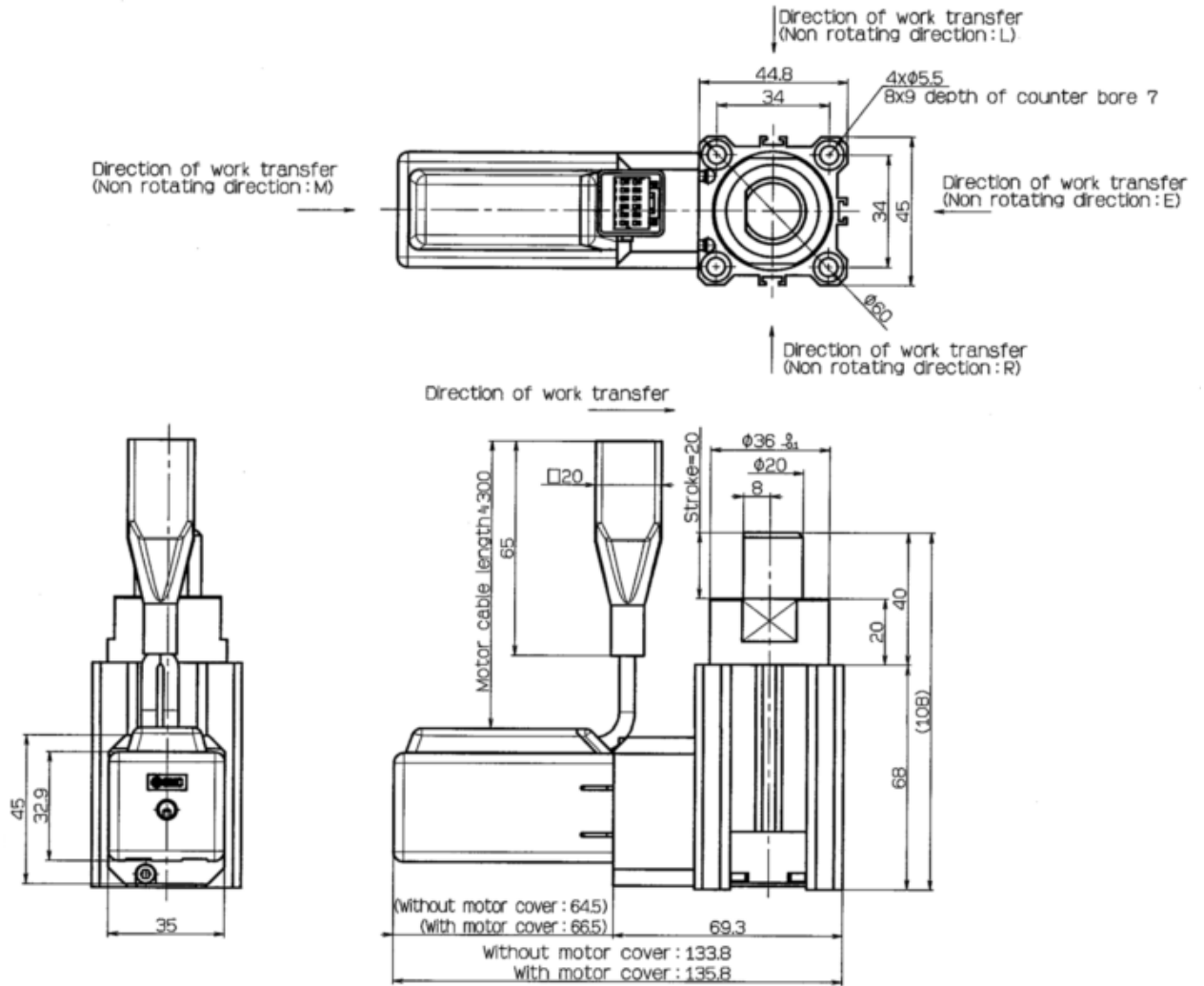
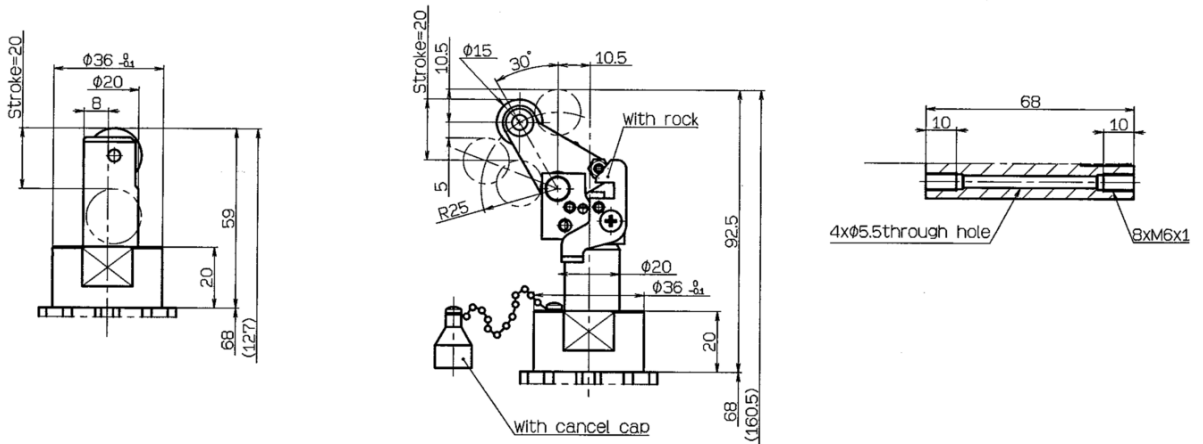


Fig.1  
Roller type  
(Rod end Configuration: R)

Fig.2  
Lever type  
(Rod end Configuration: L/B/C/D/E)

Fig.3  
Mounting bracket  
/Both ends tapped type



※The drawing shows the product with motor cover.

※The drawing shows the product with the rod chamfer facing the motor.

※The drawing shows the product with the chamfered type rod end. Refer to Fig.1 and Fig.2 for other specifications.

# ■Dimensions: mm【LEBQ50】

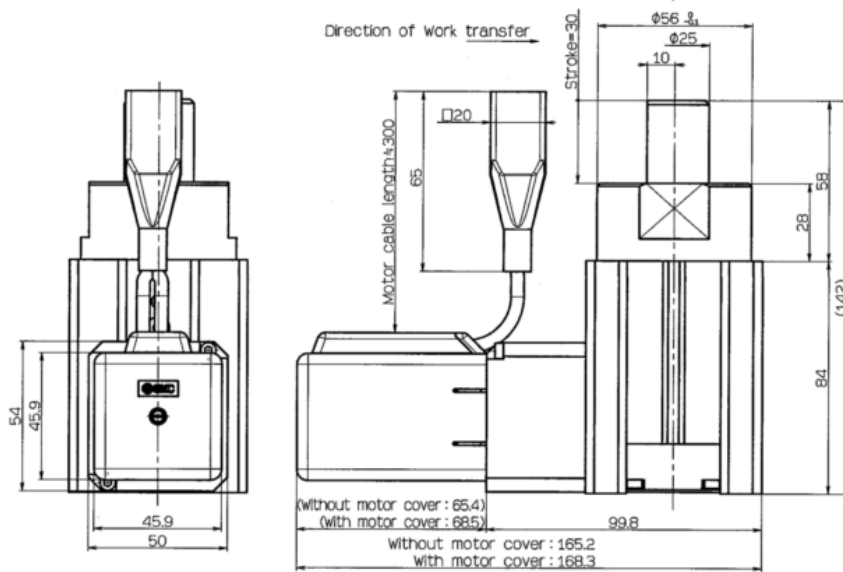
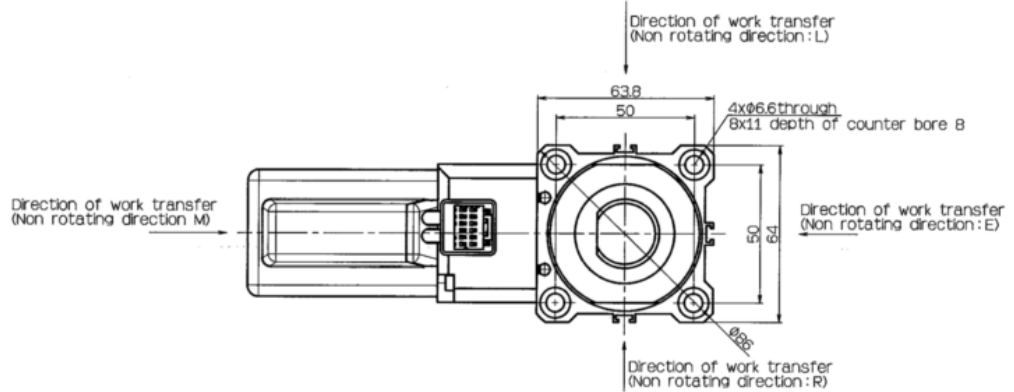


Fig.1  
Roller type  
(Rod end Configuration: R)

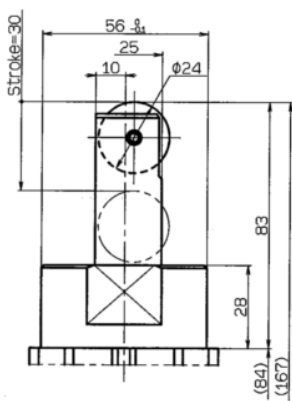


Fig.2  
Lever type  
(Rod end Configuration: L/B/C/D/E)

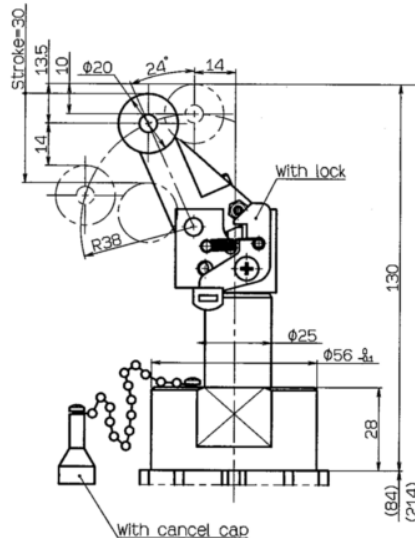
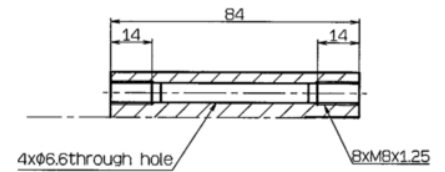


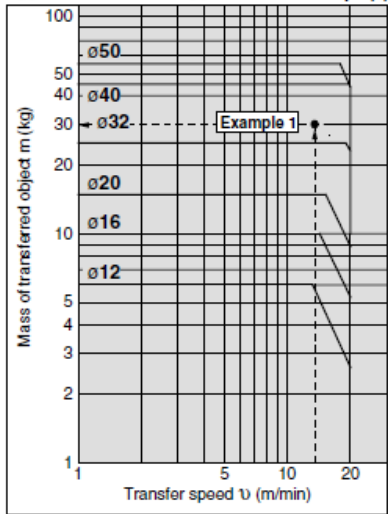
Fig.3  
Mounting bracket  
/Both ends tapped type



- ※The drawing shows the product with motor cover.
- ※The drawing shows the product with the rod chamfer facing the motor.
- ※The drawing shows the product with the chamfered type rod end. Refer to Fig.1 and Fig.2 for other specifications.

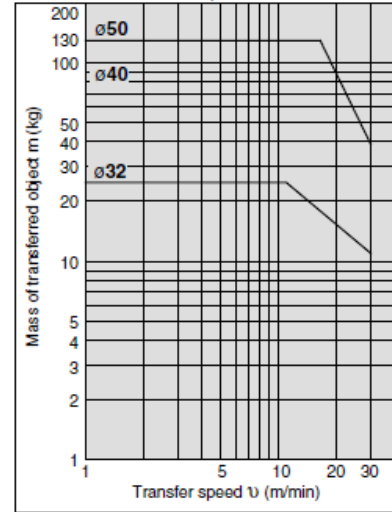
## ■ Operating range

Roller Type/Round Bar Type/Chamfered Type



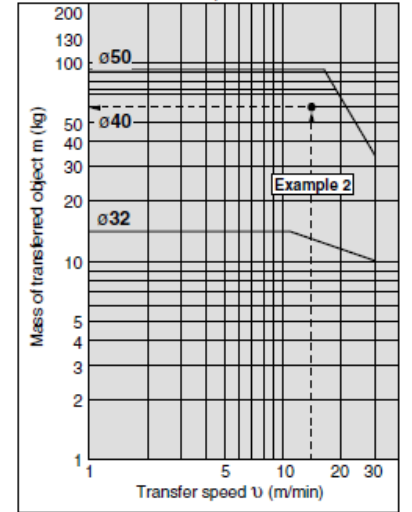
Lever Type (With shock absorber)

Friction coefficient  $\mu = 0$



Lever Type (With shock absorber)

Friction coefficient  $\mu = 0.1$



• Lever-type mass of transferred object and transfer speed graphs (graphs (2) and (3)) show the values at room temperature (20 to 25°C).

• When selecting cylinders, confirm the Specific Product Precautions as well.

## ■ Precautions

1. Since no magnet is mounted in this product, auto switches are not applicable.
2. In regard to the mass of the transferred object and the transfer speed, conform to the operating ranges.



**Caution** To ensure the safest possible operation of this product, please be sure to read thoroughly the "Safety Instructions" in our "Best Pneumatics" catalog before use.